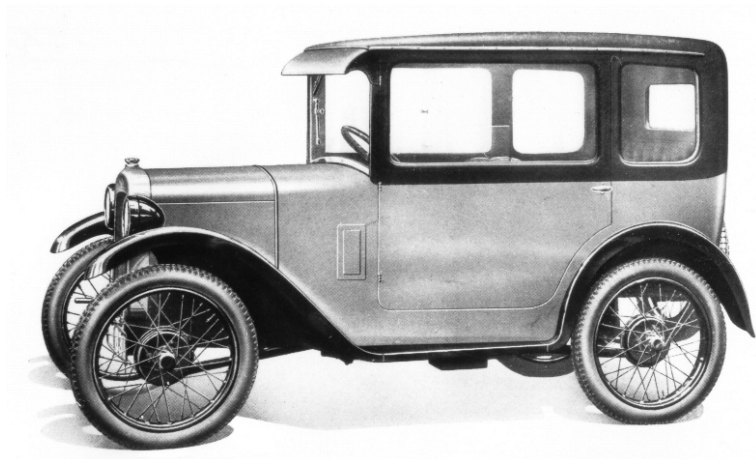


Austin Seven Spare Parts Catalogue



A7 Components

18 Russell Avenue
Dunchurch
Rugby
CV22 6PX

David Cochrane

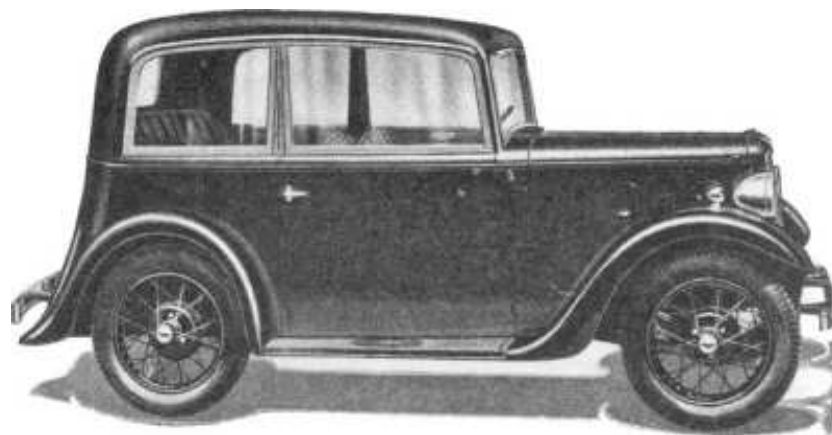
01788 522033 david@a7c.co.uk

www.a7c.co.uk

Please note:

- Our prices are in pounds sterling and include VAT where applicable.
- All parts are priced per unit unless otherwise stated.
- Cheques should be made payable to A7 Components Ltd.
Please do not send us a cheque until you have been given the correct total for your order. If you prefer, you can telephone us with your debit (or credit) card details.
- Prices do not include postage and packing – these costs are calculated when your order is packed. We regret that we are generally not able to provide the total cost (including shipping) of an order prior to packing. Parts can be sent to anywhere in the world, and we use Royal Mail, Parcelforce or other carrier at our discretion, or as specified by you. Our packing & carriage fee covers postage/carriage, packing & handling, insurance, payment processing, etc. Please note that a signature may be required on delivery and you should make sure that the package is undamaged before signing for it. In the event of an insurance claim you must keep all packaging materials and contents for inspection.
- We are usually open Monday to Saturday, 8.30 am to 7.30 pm. Callers are welcome, by appointment only please.
- Prices and availability may change due to circumstances beyond our control. New spares are frequently added to our range, so if the part you want isn't listed, please ask. OOS = Out of stock (temporarily we hope). POA = Price on application (please ask for a price for this part).
- All goods remain the property of A7 Components Ltd until payment has been received in full.
- Should you wish to return an item, please notify us within 7 days of receiving it. Return postage is the responsibility of the customer.

9E75c	Valve springs, double		12.70	set
9E30	Valve cup, collet type (for double springs)	Sports	OOS	
BE971p	Plate for making 'banana' exhaust system		11.90	ea
BE51	Plate for exhaust downpipe		4.60	ea
BD198	Fan belt, wide (sports/export models)		7.80	ea
9E912	Double (inner) clutch springs		8.40	set
BP73s	Hardy-Spicer propshaft to fit SWB cars (gearbox spider to Cardan joint flange)	Special	225.00	ea
BP118s	Hardy-Spicer propshaft to fit LWB cars (gearbox spider to Cardan joint flange)	32-33	225.00	ea
BP957	Fixing bolts & nyloc nuts for gearbox spider	Special	3.20	set
BP918	Fixing bolts & nyloc nuts for Cardan joint flange	Special	3.30	set
9C134a	Steering arm (lowered suspension)		75.00	ea
BP120k	Crown wheel & pinion (5.67:1)		435.00	set
BO128t	Halfshaft (short, extended taper, .890 journal)		184.00	ea
1A7300a	Halfshaft (long, extended taper)		186.90	ea
1A7212a	Key for long-taper halfshaft		1.20	ea
1A7661a	Rear hub, outer (extended taper)		108.00	ea
BR947u	Cow-horns for repro Ulsters built on LWB chassis	Special	65.00	pair
BM24r	Raked steering box (Ulster/Cup)		205.00	ea
9E917c	Steering column clamp bracket (Ulster)		34.60	ea
B8-63/4e	Radius arm ends for lowered suspension		142.00	pair
9C161	Bolt, nut & spring washer for above	Sports	5.90	ea
BU2s	Front shock absorber assembly (sports/racing)		138.00	ea
9E93	Rear brake cable brackets for use with flattened springs		4.00	pair
BS6s	Wheel nut (stainless steel)		3.25	ea
BS948h	400/425/450 x 18" inner tube (heavy duty)		18.90	ea
B8-34	Choke pull assembly	Ulster	73.50	ea
BD241	Radiator cap, chrome winged type	Nippy	20.80	ea



BT961d	¼ BSF die		5.80	ea
BT962t	5/16 BSF tap		3.90	ea
BT962d	5/16 BSF die		5.80	ea
BT963t	3/8 BSF tap		3.90	ea
BT963d	3/8" BSF die		5.80	ea
BT965t	¼ BSW tap		3.90	ea
BT965d	¼ BSW die		5.80	ea
BT966t	5/16 BSW tap		3.90	ea
BT966d	5/16 BSW die		7.70	ea
BT967t	Halfshaft tap (5/8 x 16 tpi)		19.20	ea
BT967d	Halfshaft die (5/8 x 16 tpi)		23.00	ea
BT953d	Die for outer hub thread (HSS)	All	87.00	ea
BT968t	Tap for top of Austin stub axle (kingpin cap)	23-36	19.20	ea
BT969p	½" parallel reamer		23.00	ea
BT980	Footpump	All	5.20	ea
BT981	Engine compression testing kit		22.40	ea
BT982	Battery & charging system tester		29.60	ea
BT983	Ignition spark tester		5.30	ea
BT988	Battery hydrometer		2.40	ea
BT989	Battery post & terminal cleaner		2.30	ea

Consumables

BT973	Blue Hylomar		6.60	tube
BT974	Stud and nut lock (10ml)		4.20	bottle
BT972	Loctite Stud 'n' Bearing Fit (5ml)		12.60	ea
BT975	Chemico double-ended tin of valve grinding paste	All	5.95	ea
BT947	¼" thread inserts		.40	ea
BT948	5/16" thread inserts		.50	ea
BT977	Simoniz Engine gloss black paint		9.40	can
BT976	Petrol tank repair patch		9.40	ea
BT978	Ethanolmate petrol additive/corrosion inhibitor (treats 55 gal)	All	13.90	ea

MISCELLANEOUS

BZ931	Reflective snap-on arm band		1.95	ea
BZ941	Austin Seven tea towel		4.80	ea
BZ921	Set of 6 note / greetings cards with envelopes		2.40	set
BZ911	Keyring with Chummy stamps		3.25	ea

Sports & Special

BA73s	Sump bolt for aluminium sump		.35	ea
C1-224	Phoenix crankshaft, 1½" jet-fed		795.00	ea
C1-224p	Phoenix crankshaft, 1½" pressure-fed		865.00	ea
C1-225	Phoenix con-rods, 1½" complete with shell bearings		865.00	set
BB7d	Rear main lip seal (high-revving engines)		10.90	ea
BC82r	Cylinder head (aluminium Ricardo, 18mm)		OOS	
1A911r	Cylinder head (aluminium Ricardo, 14mm)		OOS	
C1-87	Sports/racing pistons (56.00, 56.50, 57.25, 57.50, 57.75mm. State clamp or floating gudgeon pins)	Sports	225.00	set
BC59f	Gudgeon pin (floating type)	Sports	3.95	ea
BC29r	Cylinder head gasket (Ricardo head)	Special	36.00	ea
2K5076	Camshaft centre bearing rollers (sports)	Sports	4.30	set 8
1A891	Camshaft centre bearing		5.60	pair
9E72a	Inlet valve, oversize (29mm)		8.20	ea

ENGINE

Crankcase

BA3	Timing gear case gasket (magneto)		23-28	1.95	ea
BA6	Timing gear cover gasket (magneto)		23-28	1.95	ea
BA18	Starting dog felt seal (magneto)		23-28	1.95	ea
BA18a	Starter dog lip seal (modern replacement)		23-28	2.95	ea
BA19	Starting dog felt housing gasket (magneto)		23-28	1.05	ea
BB36	Starting nut (magneto)		23-28	OOS	
BT952	Starting dog (magneto) box spanner		23-28	14.60	ea
BB52	Starting nut (starter dog), coil		30-39	14.30	ea
BB37	Starting nut lockwasher		23-28	.35	ea
BB33	Magneto drive felt seal		23-28	1.60	ea
BB30	Magneto drive Woodruff key		23-28	.70	ea
BA120	Nosecone gasket (coil)		28-39	.65	ea
BA121	Nosecone bolt		28-39	.30	ea
BA121c	Nosecone bolts & washers		28-39	1.60	set
BA125	Front bearing housing plate		28-39	2.40	ea
BA126	Front bearing cover plate screw		28-39	.35	ea
BA127	Front bearing cover plate tab washer		28-39	.40	ea
BA25	Cylinder block base stud (EN16)		All	1.15	ea
BA25s	Cylinder block base stud (stepped)			2.35	ea
BA26	Cylinder block base nut		All	.10	ea
BA38	Barrel nut		All	1.95	ea
BA25c	Block / crankcase studs, barrel nuts, nuts & spring washers		All	15.50	set
BC13	Cylinder block base gasket		All	.95	ea
BA37	Oil baffle		All	5.90	ea
BA65f	Bell housing stud (BSF)		23-28	1.15	ea
BA65	Bell housing stud (BSW)		28-39	1.10	ea
BA65s	Bell housing stud (stepped, BSF or BSW)		All	2.60	ea
BA65c	Bell housing studs, nuts & spring washers		All	9.50	set
BA66	Nuts for bell housing studs (BSF/BSW)		All	.70	set
BA166	Flywheel pit cover (2nd-hand)		32-39	7.70	ea
BA139	Oil jet (early)		23-36	3.25	ea
1A909	Oil jet (late)		36-39	3.25	ea
BA55	Oil-way plug (small)		All	2.50	ea
BA57	Oil-way plug (medium)		23-32	1.40	ea
BA59	Oil-way plug (large)		All	1.50	ea
BA168	Oil dipstick (2nd-hand)		32-39	9.20	ea
BA71	Sump (2nd-hand)		All	12.70	ea
BA72	Sump gasket		All	1.15	ea
BA73f	Sump bolt (BSF)		23-26	1.65	ea
BA73	Sump bolt (BSW)		26-39	1.65	ea
BA73o	Sump bolt (oversize BSW, same size head)			1.95	ea
BA73s	Sump bolt for aluminium sump		Sports	.35	ea
BA138	Oval sump washer		All	.30	ea
BA138o	Oval sump washer (oversize)			.55	ea
BA73c	Sump bolts, oval washers & spring washers		All	27.60	set
BA75f	Sump filter frame		All	4.50	ea
BA75g	Sump filter gauze		All	4.60	ea
BA76	Sump gauze bolt		28-39	.25	ea
BA76c	Sump gauze bolts & spring washers		28-39	2.45	set

BA79	Sump drain plug	All	4.90	ea
BA79m	Sump drain plug with magnetic insert	All	8.30	ea
BA80	Sump drain plug fibre washer	All	.60	ea
BA93	Vernier coupling (magneto)	23-28	12.30	ea
BA94	Magneto fixing strap	23-28	30.20	ea
BA135	Camshaft front retaining bolt (square head)	28-39	4.45	ea
BA136	Fibre washer for BA135	28-39	.15	ea
BA162	Petrol pump mounting stud	32-39	1.50	ea
BA935	Crankcase fibre washer set (magneto / coil)	All	2.15	set
BA68	Engine mounting bolt	23-33	.95	ea
BA185	Front engine mounting stud	33-39	4.15	ea
BA186	Castle nut & split pin for above	33-39	.70	pair
BA177	Rear engine mounting bolt	33-39	.90	ea
BA69	Nyloc nut for rear engine mounting bolt	All	.40	ea
BA180c	Engine mounting rubbers	33-39	9.80	set
BA181	Upper mount steel washer (1")	33-39	.20	ea
BA184	Lower mount steel washer (1½")	33-39	.25	ea
BA1f4	Front repair flange (4 hole) c/w screws	All	13.25	ea
BG4	Dynamo housing gasket (magneto engine)	28-39	1.10	ea
BG106	Dynamo housing gasket (coil engine)	28-39	.40	ea
BG99	Dynamo fixing bolts	28-39	.40	ea
BG100	Dynamo fixing bolt	28-39	.35	ea
BG113	Dynamo housing cover gasket	28-39	.25	ea
BG112a	Dynamo housing cover bolt (second-hand)	28-39	.25	ea
BG102	Dynamo gasket	28-39	.30	ea

Oil System

BA50	Oil pressure relief valve bolt (early)	23-32	4.65	ea
BA163	Oil pressure relief valve bolt (late)	32-39	4.65	ea
BA51c	Oil pressure ball, spring & fibre washer	All	1.95	set
BA52	Fibre washer for oil pressure relief valve bolt	All	.75	ea
BA51	Oil pressure spring	All	.95	ea
BA53	Oil pressure ball	All	.40	ea
BA44	Oil filler cap, magneto engine	23-28	5.90	ea
BA130	Oil filler cap (coil)	28-39	25.90	ea
BA113	Oil pump Woodruff key	All	.50	ea
BA108	Oil pump vane springs	All	1.30	pair
BA103	Oil pump gasket	All	.45	ea
BA105	Oil pump bolt	All	.75	ea
BA42	Oil pump spindle cover	All	.80	ea
BA43	Oil pump cover gasket	All	.35	ea
BA114p	Copper pipe for oil pressure button/gauge	All	1.25	foot
BA114n	Nipple for above	All	1.90	ea
BA115	Nut for above	All	2.65	ea
BA139	Oil jet (early)	23-36	3.25	ea
1A909	Oil jet (late)	36-39	3.25	ea
BA55	Oil jet cover plug	All	2.50	ea
BA57	Oil-way plug (medium)	23-32	1.40	ea
BA59	Oil-way plug (large)	All	1.50	ea
BA168	Oil dipstick (2nd-hand)	32-39	9.20	ea

Crankshafts, Conrods & Pistons

BB1	Crankshaft, 1 1/8" jet-fed (Phoenix)	23-29	865.00	ea
-----	--------------------------------------	-------	--------	----

BT832	As I was Going to St Ives 24pp colour brochure (1292)	1935	6.50	ea
BT833	The Austin Seven Covers the Country 4-fold green leaflet	1936	1.50	ea
BT834	Ulster tri-fold colour leaflet (730b)	1931	5.75	ea
BT835	Ruby 16 page colour brochure (1212)	1934	7.20	ea
BT836	Austin vans 7/10/12hp 20 page colour brochure	1937	11.50	ea
BT841	Longbridge Bodies poster		5.50	ea
BT842	Special bodies poster		3.70	ea
BT843	'Chummy in the Lane' poster		4.50	ea
BT844	Garage wallchart		19.90	ea

Tools

Toolkit

BT1	Austin spanner ½" x 9/16" BSF (2nd-hand)	All	4.40	ea
BT2	Austin spanner 3/8" x 7/16" BSF (2nd-hand)	All	5.40	ea
BT3	Austin spanner ¼"s x 5/16" BSF (2nd-hand)	All	7.60	ea
BT1c	Austin spanners (BT1, BT2, BT3 & BT12 - 2nd-hand)	All	27.00	set
BT901	8 BSF/BSW combination spanners	All	19.90	set
BT32	3/16"x ¼" box spanner	All	3.90	ea
BT4	¼" x 5/16" box spanner	All	3.90	ea
BT40	5/16" x 3/8" box spanner	All	4.30	ea
BT6a	½" x 9/16" box spanner	All	9.50	ea
BT5	5/8" x ¾" box spanner	All	14.70	ea
BT7	5/16" x 6" tommy bar	All	1.80	ea
BT8	Jet key for Zenith 22FZ carburettor	23-32	5.90	ea
BT11	Hub cap & steering column spanner	All	8.25	ea
BT16	Wheel brace (second-hand)	All	18.00	ea
BT16	Wheel brace	All	9.00	ea
BT31	Spanner for dynamo casing nut & cylinder nut	23-36	6.90	ea
BT41b	Grease gun (for modern nipples)		12.70	ea
BT41c	Grease cartridge for above		3.30	ea
BT910	Feeler gauges (Imperial)	All	4.40	set
BT23a	Canvas tool roll, 12 pockets, 18"x12"	All	5.50	ea

Garage

BT17	Valve spring compressor (2nd hand)	All	25.90	ea
BT24	Hub puller	All	14.20	ea
BT920	Flywheel puller	All	15.60	ea
BT921	Clutch cover plate assembly bolt	All	.40	ea
BT922	Piston ring clamp	All	8.60	ea
BT923	Piston ring pliers	All	4.35	ea
BT979	Valve grinding stick	All	1.00	ea
BT958	Brake shoe spring hook	All	10.60	ea
BT924	Kingpin greaser	23-36	9.20	ea
BT926	Kingpin extractor tool	All	25.90	ea
BT925	Rivet punch	All	21.60	ea
BT952	Hub bearing nut / starting nut box spanner	23-38	14.60	ea
BT940	Thread restorer file (BSW/BSF)		26.30	ea
BT941	¼" BSF thread insert/repair kit		26.70	ea
BT942	¼" BSW thread insert/repair kit		28.20	ea
BT943	5/16" BSF thread insert/repair kit		27.60	ea
BT944	5/16" BSW thread insert/repair kit		29.20	ea
BT961t	¼ BSF tap		3.90	ea

BOOKSHOP

Books

BT802	Austin Seven Workshop Manual (Woodrow)	55.00	ea
BT815	Basic Fitting for Austin Seven Restorers (Chris Gould)	7.90	ea
BT803	Austin Seven Companion (750 Motor Club)	18.50	ea
BT804	Original Austin Seven: The Restorer's Guide (Rinsey Mills)	32.60	ea
BT805a	The Austin Seven (R J Wyatt – 1st edn)	21.00	ea
BT805b	The Austin Seven (R J Wyatt – 2nd edn)	21.50	ea
BT806	The Austin Seven (Shire Library – Jonathan Wood)	4.99	ea
BT807	A Digest of Technical Articles (PWA7C)	7.90	ea
BT808	Tuning and Maintenance of the Austin Seven	4.70	ea
BT809	The Austin Seven – a pictorial tribute (R J Wyatt)	26.50	ea
BT811	A Guide to Building Reproduction Austin Ulsters (Gould)	30.80	ea
BT812	A Guide to the Austin "65" and Nippy (Gould)	29.40	ea
BT813	A Guide to Building Austin Imp Specials (Gould)	19.50	ea
BT814	Reproducing '65' & Nippy Door Catches (Gould)	9.80	ea
BT819	The Book of the Austin Seven and Eight (Pitmans)	9.80	ea
BT921	Austin Seven Competition Cars 1922-1982 (Martin Eyre)	29.50	ea
BT822	The Austin Seven (Profile Publications)	7.95	ea
BT823	Austin Seven & Ten Road Test Portfolio	19.95	ea
BT824	Austin Seven Competition History	60.00	ea
BT825	Would Suit Enthusiast: L.M. Williams and his Austin Seven Specials (Stuart Ulph)	20.00	ea
BT826	Motor Sport Book of the Austin Seven	9.80	ea
BT827	Austin From The Inside (Freddie Henry)	4.50	ea
BT828	Bert Hadley – A Tribute (Geoff Roe)	21.30	ea
BT829	Austin und Willys aus Berlin (German & English)	16.90	ea
BT830	A Comprehensive History of the Grasshopper (Hornby / Hanna)	22.50	ea
BT851	Austin Seven Cigarette and Trade Cards	11.50	ea
BT852	Coleman's Drive (paperback)	7.95	ea
BT854	Seven Years with Samantha: Around the World in a Vintage Austin 7	19.50	ea
BT856	Coleman's Cars	1.00	ea
BT853	Austins Over The Andes (Vince Leek)	20.90	ea
BT857	Ruby by Colin Thompson	11.50	ea
BT858	Austin	5.00	ea
BT859	Austin and the Secret of Karnak House	7.00	ea
BT870	List of Production Changes	10.00	ea
BT871	DVD of A7CA magazines 1970A to 2011D	5.00	ea

Handbooks & Spare Parts Lists

352i	Handbook – Chummy (AC body)	1925	9.00	ea
715A	Handbook – Saloon RL Body	May 30	9.00	ea
BT860	Zenith 22FZ handbook	1930	7.60	ea
BT862	Zenith 26VA diagram & technical notes	32-39	1.60	ea
1029	List of Spare Parts	Aug 33	9.00	ea
1406C	List of Spare Parts	Nov 36	9.00	ea
1521	List of Spare Parts - Body Parts	Apr 37	9.00	ea
1586A	List of Spare Parts	Oct 38	9.00	ea

Second-hand original Handbooks and Lists of Spare Parts are occasionally available

Brochures & Posters

BT831	The Austin Seven Comes of Age 20pp colour brochure	1931	5.00	ea
-------	--	------	------	----

BB45	Crankshaft, 1 ⁵ / ₁₆ " jet-fed (Phoenix)	29-36	790.00	ea
BB45p	Crankshaft, 1 ⁵ / ₁₆ " pressure-fed (Phoenix)	29-36	POA	
C1-224	Crankshaft, 1 ¹ / ₂ " jet-fed (Phoenix)	Sports	795.00	ea
C1-224p	Crankshaft, 1 ¹ / ₂ " pressure-fed (Phoenix)	Sports	865.00	ea
BC43	Con-rod, 1 ¹ / ₈ " (2nd-hand)	23-29	3.10	ea
BC67p	Phoenix con-rods, 1 ⁵ / ₁₆ " (for white-metalling)	29-36	790.00	set
C1-225	Phoenix con-rods, 1 ¹ / ₂ " complete with shell bearings	Sports	865.00	set
BC68	Big end bolt (EN24U)	23-37	4.35	ea
1A920	Big end bolt (shell-bearing)	37-39	5.15	ea
BC45a	Big end nuts, self locking	All	3.20	set 8
BC68c	Big end bolts & self locking nuts	23-37	36.00	set 8
1A920c	Big end bolts (shell-bearing) & self locking nuts	37-39	42.00	set 8
BC46	Big end bolt split pins	All	.30	set 8
BC56c	Pistons, complete with rings & pins (std, +.010", +.020", +.030", +.040", +.060", +.080")	All	185.00	set
BC57c	Set of 4 piston rings	All	18.50	set
C1-87	Sports/racing pistons (56.00, 56.25, 56.50, 56.75, 57.00, 57.25, 57.50, 57.75mm. State clamp or floating gudgeon pins)	Sports	225.00	set
BC59	Gudgeon pin (clamp type)	All	3.25	ea
BC59f	Gudgeon pin (floating type)	Sports	3.90	ea
BC47	Little end bolt	All	.65	ea
BC48	Little end lockwasher	All	.25	ea
BC47c	Little end bolts & lockwashers	All	3.50	set
BB37	Starting nut lockwasher	All	.35	ea
1A894	Centre main lockwasher	36-39	.65	ea
BB22	Front crankshaft key	29-39	.60	ea
BJ2	Rear crankshaft key	All	.90	ea
BA125	Front main bearing cover plate	28-39	1.85	ea
BA126	Front bearing cover plate screw	28-39	.35	ea
BA127	Front bearing cover plate tab washer	28-39	.40	ea
BB6	Felt seal plate (2nd-hand)	23-29	1.40	ea
BB7	Rear main felt seal	23-29	2.20	ea
BB7a	Rear main lip seal (1 ¹ / ₈ "	23-29	3.00	ea
BB7b	Rear main lip seal (1 ⁵ / ₁₆ " – early)	29-30	2.90	ea
BB7c	Rear main lip seal (1 ⁵ / ₁₆ "	30-39	2.90	ea
BB7d	Rear main lip seal (high-revving engines)	Sports	10.90	ea
BB10	Rear main bearing housing, magneto engine (2nd-hand)	23-29	4.00	ea
BB10s	Rear main bearing housing machined for seal plate BB47a	23-29	12.05	ea
BB46	Rear main bearing housing, coil engine (2nd-hand)	29-39	5.00	ea
BB47	Rear main seal plate (2nd-hand)	29-39	3.40	ea
BB47a	Rear main seal plate for modern oil seal (seal not incl.)	29-39	19.90	ea
BB49	Rear main oil thrower (2nd-hand)	29-39	2.95	ea
BB11	Rear main bearing housing gasket (thin)	All	.25	ea
BB48	Oil seal plate gasket (thick)	All	.55	ea
BB50	Rear main bolts (shallow head)	29-39	OOS	
BB13d	Rear main seal plate tab washer	All	.45	ea
BJ3	Flywheel nut (1 ¹ / ₈ "	23-29	3.90	ea
BJ4	Flywheel nut lockwasher (1 ¹ / ₈ "	23-29	.35	ea
BJ29	Flywheel nut (1 ⁵ / ₁₆ "	29-39	3.90	ea
BJ30	Flywheel nut lockwasher (1 ⁵ / ₁₆ "	29-39	.35	ea
BB912	Magneto engine tab washer set	23-29	1.90	set

BB913	Coil engine tab washer set	29-39	2.70	set	2H5905	Bonnet buffer	34-39	2.10	ea
BT922	Piston ring clamp	All	8.60	ea	2H6161	Bonnet corner rubber (all models except Chummy)	30-39	1.95	ea
BT923	Piston ring pliers	All	4.35	ea	3G227	Bonnet ventilator handle (Ruby, etc)	34-39	5.90	ea
Engine Bearings					BW931	Bonnet rest rubber	23-34	1.75	foot
BB15	Front main ball bearing (JAF)	23-33	37.50	ea	BW932	Bonnet rest webbing, front	34-39	6.50	4 ft
BB15	Front main ball bearing (RHP)	23-33	52.50	ea	BW933	Bonnet rest rubber/webbing, rear	34-39	20.40	8 ft
BB17	Front main roller bearing (RHP)	23-33	75.80	ea	BV985	Toolbox lid rubber knob (Ruby, etc)	34-39	3.80	ea
BB15a	Front main A/C bearings (alternative to ball & roller)	23-34	154.00	pair	BV986	Screws, nuts & washers for above	34-39	.25	set
BB68	Front main A/C bearings (RHP)	34-39	169.00	pair	BV975	Door buffer (Box, etc)	30-34	4.10	ea
BB17	Rear main roller bearing (1 ¹ / ₈ " – RHP)	23-29	75.80	ea	2H8000	Door buffer (Early [ARQ] Ruby)	34-36	3.40	ea
BB51	Rear main roller bearing (1 ⁵ / ₁₆ " – RHP)	29-39	79.50	ea	2H8001	Door buffer (Late [ARR] Ruby)	36-39	3.40	ea
BB16	Timing gear ball bearing (magneto engine)	23-28	23.20	ea	BV977	Door check-straps (various colours; Chummy/Box)	23-34	13.00	pair
1A885/6	Centre main shell bearings (std, .010", .020", .030", .040", .050")	36-39	46.00	pair	C1-67	Door pull chains (various colours; Box/Ruby)	30-39	25.90	pair
1A919	Big end shell bearings (std, .010", .020", .030", .040", .050")	37-39	65.00	set 8	3A3601r	Top door hinge seal (Ruby/Pearl)	34-39	2.50	ea
BB19	Camshaft centre bearing roller race	23-36	15.60	ea	BG952	Lucas trafficator base seal	34-39	3.20	ea
BB20	Camshaft centre bearing rollers	23-36	2.75	set 9	BV932	Running board rubber motif		12.70	ea
2K5076	Camshaft centre bearing rollers (sports)	Sports	4.30	set 8	1A5382	Rear bumper iron rubber ferrule	34-39	5.50	ea
1A891	Camshaft centre bearing (second-hand)	36-39	5.60	pair	1A5383	Blanking piece for cars without bumpers (rear)	34-39	5.50	ea
Cylinder Head					BW951	Hood rest rubber (Chummys, Tourers, 2 seaters)	30-36	4.20	ea
BC82r	Cylinder head (aluminium Ricardo, 18mm)	Sports	268.00	ea	BW952	Late 4 seater tourer hood buffers	36-39	12.70	pair
1A911r	Cylinder head (aluminium Ricardo, 14mm)	Sports	268.00	ea	BW953	Pearl (early C type) hood rest buffer	34-36	3.10	ea
BC29	Cylinder head gasket (low comp. head – Payens)	23-36	33.40	ea	BW954	Pearl (late CA type) hood rest buffer	36-39	3.70	ea
BC29r	Cylinder head gasket (Ricardo head)	Special	36.00	ea	2H5014	Sliding roof channel buffer	34-39	1.05	ea
1A912	Cylinder head gasket (high comp. head – Payens)	36-39	34.70	ea	BR953	Rear axle bump stop (Box, etc)	31-34	6.50	ea
BC982	Head core plug	30-39	.50	ea	BR153	Low frame rear axle bump stop	34-39	11.60	ea
BC18	Top water outlet manifold (early)	23-36	11.00	ea	BK943	Handbrake gaiter (Box, etc; various colours)	30-34	11.00	ea
BC19	Water outlet manifold gasket (early)	23-36	.50	ea	3A9097	Handbrake gaiter (Ruby, etc; various colours)	34-39	15.60	ea
BC20a	Water outlet manifold stud (stainless)	23-36	1.60	ea	BK944	Handbrake gaiter plate (Box, etc)	30-34	1.95	ea
BC20c	Water outlet manifold stud, nut & fibre washer	23-36	2.15	set	Windscreen				
BC20s	Water outlet manifold stud, stepped		2.60	ea	BW902	Seal between top and bottom glass (Chummy/Tourer)	23-32	5.50	3 ft
BC23	Fibre washer for water manifold stud	23-36	.10	ea	BW903	Seal for bottom of windscreen frame (Chummy/Tourer)	23-32	5.50	3 ft
9E16	Top water outlet manifold (late)	36-39	11.00	ea	BW905	Window surround rubber seal (Top Hat & RK saloons)	26-31	.90	foot
9E45	Water outlet manifold gasket (late)	36-39	.45	ea	BW906	Windscreen top hinge-to-body seal (Box saloons)	30-34	5.50	3 ft
BG918	Spark plug, Champion 18mm	23-36	5.75	ea	BW910	Windscreen surround rubber seal (Box steel frame screen)	30-33	9.10	5ft
BG917	Spark plug, NGK 18mm	23-36	6.20	ea	BW904	Windscreen surround rubber seal (RP Box)	32-34	22.70	ea
BG914	Spark plug, NGK 14mm	36-39	3.00	ea	2H7976	Windscreen surround rubber seal (Ruby/Pearl)	34-39	27.20	ea
BC6c	Cylinder head nuts	All	1.25	set 14	BW907	Seal for bottom of windscreen frame (Opal/Tourer)	34-39	4.40	3 ft
BC7c	Cylinder head washers	All	.45	set 14	BW913	Windscreen pillar base seal (LWB Tourer)	32-39	2.75	ea
BD42	Radiator top hose (Chummy, etc)	23-28	4.00	ea	BW914	Top windscreen end clips (Chummy/Tourer; nickel/chrome)		5.90	ea
BD43	Radiator bottom hose (Chummy, etc)	23-28	4.50	ea	BW915	Windscreen patent plate	23-30	5.20	ea
BD103	Radiator top hose (late Chummy, Box, etc)	28-34	4.00	ea	C1-61r	Windscreen catch rubber buffer (early [ARQ] Ruby)	34-35	.65	ea
BD122	Radiator bottom hose (late Chummy, Box, etc)	28-34	4.50	ea	2H7104s	Window winder spring (Box/Ruby)	30-39	6.70	ea
BD43	Radiator top & bottom hoses (Ruby, etc)	34-39	4.50	ea	2H7997	Window handle (rear quarter – late [ARR] Ruby)	36-39	36.30	ea
BD44	Enots radiator hose clip (nickel/brass)	23-39	10.80	ea	2H7784	Wiper blade 8" long, rubber peg fixing	All	7.80	ea
BD44j	Zinc-plated hose clip	All	.65	ea	BW909	Wiper blade rubber retaining peg	All	.50	ea
BT977	Simoniz Engine gloss black paint		9.40	can	2H7788b	Wiper arm, black (adjustable)	23-29	21.30	ea
Cylinder Block					2H7788c	Wiper arm, chrome (adjustable)	29-39	19.90	ea
BC901	Cylinder liner	All	24.50	ea	BW908	Vacuum wiper hose	23-34	6.80	7 ft
BC13	Cylinder block base gasket	All	.95	ea	BW922	Rectangular suction mirror – flat glass, black plastic back		7.00	ea
					2H8043g	Sun visor 'glass' (green plastic) for Ruby/Pearl	34-39	6.05	ea

BV954	Chassis Number plate	27-39	3.25	ea	BC13p	Block base shim plate (aluminium – state .020" or .030")		7.90	ea
3A628p	'Dependability' bonnet stay plate (red/silver)	34-39	4.70	ea	BC14b	Block core plug (knock in)	31-39	.75	ea
BV985	Toolbox lid rubber knob (Ruby, etc)	34-39	3.80	ea	BC24	Valve guide, flanged	23-31	4.90	ea
BV986	Screws, nuts & washers for above	34-39	.25	set	BC24c	Valve guides, flanged (8)	23-31	38.90	set
BV961	Seat hinge (Chummy, etc)	24-30	7.80	ea	BC74	Valve guide, plain	31-39	2.50	ea
BV962	Seat hinges (Box, etc)	30-34	25.90	pair	BC74c	Valve guides, plain (8)	31-39	19.20	set
BV946	Hood catches		34.60	pair	BC5	Head stud, standard length (EN16T)	All	1.35	ea
C1-209	Sliding roof fastener	34-39	30.50	ea	BC5c	Standard head studs, nuts & washers	23-36	20.50	set
3A5143	Sliding roof handle	34-39	12.90	ea	BC5s	Head stud, standard length (stepped)	as req'd	2.85	ea
BV940	Pytchley sunroof badge	30-39	5.20	ea	9E28	Head stud, long (EN16T)	36-39	1.45	ea
2H5014	Sliding roof channel buffer	34-39	1.05	ea	9E28c	Late head studs, nuts & washers	36-39	20.70	set
5B271	Rear blind knob	30-39	4.40	ea	9E28s	Head stud, long (stepped)	as req'd	3.15	ea
5B272	Rear blind hook	30-39	5.70	ea	BD47	Side water inlet manifold	All	18.80	ea
Dashboards & Controls					BD48	Water inlet manifold gasket	All	.75	ea
BM128	Gas/ignition control plate	23-32	30.30	ea	BD48p	Side water jacket repair plate & screws	All	8.40	ea
BM12	Control lever friction block	23-34	2.35	ea	BC21a	Water inlet manifold stud (stainless; long)	All	1.80	ea
BM13	Control lever screw	23-34	2.75	ea	BC22a	Water inlet manifold stud (stainless; short)	All	1.60	ea
BM14	Control lever spring	23-34	.95	ea	BC21c	Side water manifold studs, nuts & fibre washers	All	3.70	set
BM12c	Control lever blocks, screws & springs	23-34	12.00	set	BC21s	Water inlet manifold stud (stepped; long)	as req'd	2.85	ea
BM183k	Trafficator knob	34-39	15.20	ea	BC22s	Water inlet manifold stud (stepped; short)	as req'd	2.60	ea
BG983	Indicator switch (steering column)		16.40	ea	BC23	Fibre washer for water manifold stud	All	.10	ea
BBG902	Dial faces stick-on replacement (state which required)		3.00	ea	BE29a	Exhaust manifold gasket	All	2.75	ea
BG161b	Ammeter / small oil gauge bezel (1½" dia)		12.70	ea	BC8	Manifold stud, medium (EN16T)	23-32	.95	ea
BG168b	Petrol / large oil gauge bezel (2" dia)		9.60	ea	BC9	Manifold stud, long (EN16T)	23-32	1.35	ea
BG170b	Magmo / Nemag speedo bezel (2½" dia)		16.80	ea	BC10	Manifold stud, short (EN16T)	23-32	1.05	ea
BG161g	Ammeter / small oil gauge glass (1.6" dia)		3.15	ea	BC76	Manifold stud, standard (EN16T)	32-39	.95	ea
BG168g	Petrol / large oil gauge glass (1.9" dia)		1.95	ea	BC11	Manifold nut (brass)	All	.75	ea
BG170g	Magmo / Nemag speedo glass (2.2" dia)		2.70	ea	BC12	Manifold washers	All	.20	set 7
BG170r	Rubber seal cord for above		.50	ea	BE31	Inlet manifold top bolt	23-32	.55	ea
BG247b	Panel light bulb (6V 3W SCC)		1.50	ea	BC9c	Up-draught manifold studs, brass nuts & washers	23-32	13.80	set 7
BG962	Patent plate (magneto engine)	23-28	8.50	ea	BC76c	Side-draught manifold studs, brass nuts & washers	32-39	12.00	set 7
BG965	Patent plate (coil engine)	29-37	9.10	ea	BC8s	Manifold stud, medium (stepped)	as req'd	2.35	ea
BG968	Patent plate (late coil engine)	37-39	7.20	ea	BC9s	Manifold stud, long (stepped)	as req'd	2.60	ea
BE65/6	Choke swivel bracket (24-29 / 29-32)	24-32	13.00	ea	BC10s	Manifold stud, short (stepped)	as req'd	2.15	ea
BE69	Choke control ring (nickel/chrome)	23-32	4.50	ea	BC76s	Manifold stud, standard (stepped)	as req'd	2.35	ea
BG175	Starter/choke pull bulkhead cable bracket (Box, etc)	32-34	2.40	ea	BA38	Barrel nut	All	1.95	ea
B8-34	Choke pull assembly	Ulster	73.50	ea	Camshaft				
BA22	Magneto switch	23-26	37.80	ea	BD111	Camshaft / fan pulley nut	28-39	.30	ea
BG315a	PLC5 ignition switch (incl. keys & mounting clip)	34-39	69.90	ea	BB22	Camshaft key	All	.60	ea
BG160c	Ignition switch retaining wire clip and gasket	32-39	5.40	ea	BB23	Camshaft gear nut (magneto)	23-28	.30	ea
BG160k	Ignition spade key	32-39	.95	ea	BB24	Camshaft gear nut lockwasher (magneto)	23-28	.30	ea
BG115b	Ignition bulb (6V)	28-32	1.10	ea	BB43	Camshaft gear nut (coil)	28-39	3.00	ea
BG163a	Ignition warning light (6V)	32-39	18.80	ea	BB44	Camshaft gear nut lockwasher (coil)	28-39	.35	ea
BG163b	Ignition bulb (2.5V)	32-39	.90	ea	BB19	Camshaft centre bearing roller race	23-36	15.60	ea
Rubber, Leather & Chains					BB20	Camshaft centre bearing rollers	23-36	2.75	set 9
BN903	Brake/clutch pedal rubber (Chummy/Box)	23-34	4.90	ea	2K5076	Camshaft centre bearing rollers (sports)	Sports	4.30	set 8
BN96	Brake/clutch pedal rubber (Ruby, etc)	34-39	4.90	ea	1A891	Camshaft centre bearing (second-hand)	36-39	5.60	pair
BF978	Accelerator pedal rubber	34-39	3.40	ea	BA135	Camshaft front retaining bolt (square head)	28-39	4.45	ea
BN96c	Pedal rubber set	34-39	13.20	set	BA136	Fibre washer for BA135	28-39	.15	ea
2H7145	Gear lever cover grommet	35-39	12.40	ea	BA32	Camshaft rear bearing bolt	All	.40	ea
2H6560	Bonnet catch rubber sleeve	All	1.95	ea	BA34	Camshaft rear bearing gasket	23-32	.25	ea

BA169	Rear camshaft bearing (2nd-hand)	33-39	4.40	ea
BA170	Camshaft rear bearing gasket	33-39	.25	ea
BB42	Camshaft oil thrower (2nd-hand)	28-39	2.45	ea
BD169	Bottom fan pulley felt seal	28-39	1.20	ea
Valve Gear				
BC61	Valve, split collet type (exhaust quality)	23-34 / 38-39	7.80	ea
9E72a	Inlet valve, oversize (29mm)	Sports	8.20	ea
BC34	Split collet	23-34 / 38-39	2.40	pair
BC33	Valve cup, collet type	23-34 / 38-39	2.40	ea
9E30	Valve cup, collet type (for double springs)	Sports	2.70	ea
BC107	Valve, pin type	35-37	7.80	ea
BC108c	Valve pins	35-37	1.50	set 8
BC109	Valve cup, pin-type	35-37	2.55	ea
BC40	Tappet screw (early cam follower)	23-24	3.90	ea
BC55	Tappet screw	24-39	3.90	ea
BC41	Tappet locknut (early cam follower)	23-24	4.50	ea
BC60	Tappet lock nut	24-39	4.50	ea
BC32c	Valve springs, single	All	7.80	set 8
9E75c	Valve springs, double	Special	12.70	set 8
BT17	Valve spring compressor (2nd hand)	All	25.90	ea
BT975	Chemico double-ended tin of valve grinding paste	All	5.95	ea
BT979	Valve grinding stick	All	1.00	ea
BC24	Valve guide, flanged	23-31	4.90	ea
BC24c	Valve guides, flanged (8)	23-31	38.90	set
BC74	Valve guide, plain	31-39	2.50	ea
BC74c	Valve guides, plain (8)	31-39	19.20	set
BC54c	Tappet guides (8, second-hand)	24-39	26.00	set
BT910	Feeler gauges (Imperial)	All	4.40	set
BT911	Thread gauges (Imperial & metric)	All	4.70	ea
BC35	Valve chest cover, early	23-30	26.50	ea
BC36	Valve chest cover stud	All	.95	ea
BC37	Valve cover thumbscrew	All	7.60	ea
BC38	Valve chest cover cork gasket	23-30	1.70	ea
BC70	Valve chest cover, late	30-39	22.00	ea
BC72	Valve chest cover cork strip	30-39	1.40	ea
Manifolds & Exhaust System				
BE21	Inlet manifold, up-draught (2nd-hand)	23-32	9.60	ea
BE22a	Inlet / exhaust manifold gasket	23-32	.75	ea
BE25c	Carb / inlet manifold bolts, nuts & washers	23-32	1.40	set
BE28	Carb / inlet manifold gasket, u/d	23-32	.40	ea
BE122a	Carburettor / manifold gasket, s/d	32-39	.75	ea
BE30	Exhaust manifold, up-draught (2nd-hand)	23-32	27.50	ea
BE117	Exhaust manifold, side-draught (2nd-hand)	32-39	24.50	ea
BE29a	Exhaust manifold gasket	All	2.75	ea
BC8	Manifold stud, medium (EN16T)	23-32	.95	ea
BC9	Manifold stud, long (EN16T)	23-32	1.35	ea
BC10	Manifold stud, short (EN16T)	23-32	1.05	ea
BC76	Manifold stud, standard (EN16T)	32-39	.95	ea
BC11	Manifold nut (brass)	All	.75	ea
BC12	Manifold washers	All	.20	set 7
BE31	Inlet manifold top bolt	23-32	.55	ea

BD952	Radiator core bottom support brackets (late Chummy, etc)	28-30	32.40	pair
Exterior				
C1-36c	Bonnet catch (Chummy, Nippy, etc.)	23-30	12.80	ea
C1-36b	Bonnet catch (Box, etc.)	30-34	12.80	ea
C1-36	Bonnet catch (Ruby, etc.)	34-39	12.80	ea
2H6560	Bonnet catch rubber sleeve	All	1.95	ea
2H5905	Bonnet buffer	34-39	2.10	ea
2H6161	Bonnet corner rubber (all models except Chummy)	30-39	1.95	ea
3G227	Bonnet ventilator handle (Ruby, etc)	34-39	6.50	ea
BW931	Bonnet rest rubber	23-34	1.75	foot
BW932	Bonnet rest webbing, front	34-39	6.50	4 ft
BW933	Bonnet rest rubber/webbing, rear	34-39	20.40	8 ft
BV943	Hood pivot pins & nuts	23-26	32.40	pair
BV944	Hood pivot pins & nuts	26-34	32.40	pair
2H7250	Wing piping	30-39	1.60	ft
BW941	Spare wheel carrier studs (large flange)	26-34	4.55	ea
2H7165	Spare wheel cover rubber beading	34-39	10.00	5½ ft
3A5478	Spare wheel cover lock escutcheon	34-39	11.00	ea
3A1890	Spare wheel cover tab plates	34-39	19.20	pair
2H7183a	Spare wheel cover T-key	34-39	5.50	ea
C1-53b	Luggage carrier badge	34-39	3.25	ea
BW883	Numberplate	All	16.20	ea
BW884	Front numberplate brackets (late Chummy/Box)		7.20	pair
1A5374	Front bumper horseshoe bracket	34-39	35.30	ea
1A5375p	Bumper blade top plug	34-39	9.20	ea
1A5375b	Oval bumper bolt	34-39	6.50	ea
1A5382	Rear bumper iron rubber ferrule	34-39	5.50	ea
1A5383	Blanking piece for cars without bumpers (rear)	34-39	5.50	ea
Door Fittings				
BV970	Door handle (Chummy)	26-30	51.90	ea
BV970	Door handle (Box)	30-34	51.90	ea
2H7130	Door handle with lock & keys	34-39	45.30	ea
2H7128	Door handle without lock	34-39	39.20	ea
2H6364	Interior door pull handle	34-39	17.30	ea
BV978	Door striker plates (Chummy)	26-31	10.40	ea
BV979	Door striker plates (Box, etc)	30-34	10.80	ea
BV973	Door cappings (nickel-plated)	28-34	38.80	set
BV976	Door handle nut (Late Chummy/Box)	30-34	1.95	ea
BV974	Door hinge (1½" x 2" wide, undrilled)	23-29	26.20	ea
BV972	Door hinge (1½" x 2" wide, undrilled)	30-34	27.50	ea
BV975	Door buffer (Box, etc)	30-34	4.10	ea
2H8000	Door buffer (Early [ARQ] Ruby)	34-36	3.40	ea
2H8001	Door buffer (Late [ARR] Ruby)	36-39	3.40	ea
2H7124	Door lock covers	34-39	25.90	pair
BV977	Door check-straps (various colours; Chummy/Box)	23-34	13.00	pair
C1-67	Door pull chains (various colours; Box/Ruby)	30-39	25.90	pair
3A3601r	Top door hinge seal (Ruby/Pearl)	34-39	2.50	ea
2H7104s	Window winder spring (Box/Ruby)	30-39	6.70	ea
Interior				
BG27	Austin Car No. & Always Quote This Number plates	23-27	25.90	set
BV953	Chassis & Car Number plates	27-39	6.50	pair

BS14c	Wheel centre (with Austin script)	26-31	198.00	ea
BS925	'Staybrite' wheel centre / hub cap (chrome-plated brass)	31-36	13.00	ea
BS928	Wheel centre (hub cap)	36-39	21.60	ea
BO54	Wheel stud & rivets	All	4.55	ea
BS6	Wheel nut (manganese bronze)	All	2.50	ea
BS6s	Wheel nut (stainless steel)	Special	3.25	ea
BS919	3.50x19" tyre (Longstone 3-block vintage-style tread)	24-34	80.40	ea
BS919a	3.50x19" tyre (Avon Sidacur Triple Duty MkII)	24-34	69.00	ea
BS919c	3.50x19" tyre (Cheng Shin)	Trials	61.80	ea
BS917	4.00x17" tyre (Longstone original 1930's pattern tread)	34-39	94.80	ea
BS917e	4.00x17" tyre (Excelsior)	34-39	113.40	ea
BS917w	4.00x17" tyre (Waymaster)	34-39	93.60	ea
BS929	19" inner tube	24-34	8.90	ea
BS927	17" inner tube	34-39	9.90	ea
BS948	400/425/450 x 18" inner tube	Van	11.50	ea
BS948h	400/425/450 x 18" inner tube (heavy duty)	Special	18.90	ea
BS939	19" rim tape	24-34	1.95	ea
BS937	17" rim tape	34-39	1.95	ea
BS911	Vintage style valve dust cap (single part chrome; fits straight onto modern tubes)	All	6.30	ea
BS914	Dust cap nut adaptor (to fit original dust caps; nickel/chrome)	All	2.40	ea
BT980	Footpump	All	5.20	ea

BODYWORK

Radiator

BD42	Radiator top hose (Chummy, etc)	23-28	4.00	ea
BD43	Radiator bottom hose (Chummy, etc)	23-28	4.50	ea
BD103	Radiator top hose (late Chummy, Box, etc)	28-34	4.00	ea
BD122	Radiator bottom hose (late Chummy, Box, etc)	28-34	4.50	ea
BD43	Radiator top & bottom hoses (Ruby, etc)	34-39	4.50	ea
BD44	Enots radiator hose clip (nickel/brass)	23-39	10.80	ea
BD44j	Zinc-plated hose clip	All	.65	ea
BD100	Radiator drain tap	All	13.90	ea
BD46	Fibre washer for above	All	.15	ea
BD40	Radiator cap (1¼" dia thread)	23-29	30.30	ea
BD180	Radiator cap (1½" dia thread)	29-32	30.30	ea
BD180c	Radiator cap (1½" dia thread, chrome-plated)	30-32	34.60	ea
BD241	Radiator cap, chrome winged type	32-34	20.80	ea
BD241m	Radiator cap, chrome winged type for motometer	32-34	37.80	ea
BD241s	Spare seal for above	32-34	1.00	ea
BD279	Radiator cap, brass under cowl type	34-39	21.70	ea
BD941w	Boyce motometer (chrome with wreath border)		63.30	ea
BD941c	Calormeter as BD941w (chrome with plain border)		63.30	ea
BD941b	Calormeter as BD941w (brass with plain border)		63.30	ea
BD98e	Radiator winged wheel badge (early Chummy)	23-26	19.80	ea
BD98w	Radiator winged wheel badge (nickel/chrome)	26-32	19.50	ea
BD282w	Radiator winged wheel badge (cowled radiator)	34-39	22.50	ea
BD282a	Arrow badge for cowled radiator	34-39	8.70	ea
BD943	'Austin' radiator script (state nickel or chrome)	26-34	21.60	ea
BD944	'Austin Seven' radiator script	34-39	24.00	ea
BD951	Radiator core bottom support brackets (early Chummy, etc)	23-28	30.30	pair

BC9c	Up-draught manifold studs, brass nuts & washers	23-32	13.80	set 7
BC76c	Side-draught manifold studs, brass nuts & washers	32-39	12.00	set 7
BC8s	Manifold stud, medium (stepped)	as req'd	2.35	ea
BC9s	Manifold stud, long (stepped)	as req'd	2.60	ea
BC10s	Manifold stud, short (stepped)	as req'd	2.15	ea
BC76s	Manifold stud, standard (stepped)	as req'd	2.35	ea
BE50	Exhaust downpipe	23-32	45.00	ea
BE52a	Exhaust flange gasket	All	1.75	ea
BE47c	Exhaust flange bolts & nuts	All	4.40	set 4
BE971p	Plate for making 'banana' exhaust system	Special	11.90	ea
BE51	Plate for exhaust downpipe	Special	4.60	ea

Fan Gear

BD39	Fan belt (magneto engine)	23-28	7.60	ea
BD109	Fan belt (coil engine)	28-39	6.60	ea
BD198	Fan belt, wide (sports/export models)	29-39	7.80	ea
BD21	Fan blade (magneto engine)	23-28	34.00	ea
BD105	Fan blade (coil engine)	28-39	26.00	ea
BD23	Fan blade screw & washer	All	1.35	ea
BD25	Top fan pulley (magneto engine; second-hand)	23-28	28.50	ea
BD106	Top fan pulley (early coil engine)	28-32	24.70	ea
BD220	Top fan pulley (late coil engine)	32-39	23.40	ea
1A903	Top fan pulley (wider, sports/export) with bushes	29-32	23.40	ea
BD33	Top fan pulley felt seal	All	.95	ea
BD49/50	Top fan pulley bushes	23-36	9.40	pair
1A905	Top fan pulley bush (late)	36-39	OOS	
BD28	Fan spindle (magneto engine)	23-28	5.80	ea
BD108	Fan spindle (coil engine, long)	28-32	4.40	ea
BD221	Fan spindle (coil engine, short)	32-39	4.40	ea
BD34	Fan spindle bracket (magneto engine)	23-28	18.00	ea
BD29/30	Fan spindle washers (steel & brass)	All	.30	set 2
BD68c	Fan spindle cotter, washer & nut	All	2.90	ea
BX1	Fan spindle grease nipple	All	.55	ea
BD26	Bottom fan pulley (magneto engine)	23-28	16.60	ea
BD107	Bottom fan pulley (coil engine)	28-39	16.20	ea
BD111	Bottom fan pulley nut	28-39	.30	ea
BD112	Bottom fan pulley spring washer	28-39	.05	ea
BD169	Bottom fan pulley felt seal	28-39	1.20	ea

Starting Handle Components

BD14	Starting handle (mag engine)	23-28	63.00	ea
BD14s	Starting handle brass sleeve	All	5.20	ea
BA18	Felt seal for starting nut (starter dog; magneto)	23-28	1.95	ea
BA18a	Starter dog lip seal (modern replacement)	23-28	2.95	ea
BB36	Starting nut (magneto)	23-28	OOS	
BT952	Starting dog (magneto) box spanner	23-28	14.60	ea
BB52	Starting nut (starter dog), coil	30-39	14.30	ea
BB37	Starting nut lockwasher	All	.35	ea
BD202	Starting handle shaft (7 ⁷ / ₈ ")	31-32	23.40	ea
BD219	Starting handle shaft (7 ¹ / ₈ ")	32-34	23.40	ea
BD276	Starting handle shaft (11¼")	34-39	25.90	ea
BD8	Starting handle spring (magneto)	23-28	2.50	ea
BD120	Starting handle spring (early coil)	28-31	2.60	ea

BD205	Starting handle spring (later coil, short)	31-34	2.85	ea
BD277	Starting handle spring (Ruby, long)	34-39	2.95	ea
BD201c	Cotter, washer & nut	28-39	2.60	ea
Fuel System				
BE3a	Petrol cap, screw-on type (scuttle tank)	23-27	16.80	ea
BE20	Petrol cap, spring clip type (scuttle tank)	27-30	22.20	ea
BE3b	Petrol cap, screw-on type (scuttle tank)	30-32	30.20	ea
BE113	Petrol filler cap (rear tank)	32-39	30.30	ea
BE962	'Prima' petrol dipstick (4 gallon, angled)	23-30	30.30	ea
BE964	'Prima' petrol dipstick (4 gallon, straight)	1930	33.60	ea
BE965	'Prima' petrol dipstick (5 gallon, straight)	30-32	33.60	ea
BE36	Petrol tap	23-30	22.40	ea
BE103s	Petrol tap cork seals	30-32	2.65	pair
BE35p	Copper petrol pipe	All	1.50	foot
BE35n	Nipple for above	All	1.95	ea
BE16n	Nut for above	All	2.75	ea
BE24f	Filter for Zenith 22FZ carburettor	23-32	8.70	ea
BE24s	Zenith 22FZ u/d carb spindle	23-29	16.20	ea
BE24c	Zenith 22FZ u/d carb choke flap	23-32	7.20	ea
BE24g	Zenith 22FZ choke flap spring	23-32	4.35	ea
BE34t	Zenith 22FZB float chamber lid (zinc – undrilled)	23-32	18.60	ea
BT8	Jet key for Zenith 22FZ carburettor	23-32	5.90	ea
BE118s	Zenith 26VA s/d carb spindle	32-39	13.80	ea
BE118so	Zenith 26VA s/d carb spindle (oversize)	32-39	15.80	ea
BE118e	Zenith 26VA emulsion block gasket	32-39	.80	ea
BE118g	Zenith 26VA choke flap springs	32-39	3.90	pair
BE118b	Zenith 26VA float chamber bolts	32-39	5.20	pair
BE149b	Zenith 26VA banjo bolt	32-39	7.80	ea
BE149u	Zenith 26VA banjo bolt union	32-39	11.40	ea
BE149w	Zenith 26VA banjo fibre washer	32-39	.15	ea
BT862	Zenith 26VA diagram & technical notes	32-39	1.40	ea
BE28	Carb / inlet manifold gasket, u/d	23-32	.40	ea
BE122a	Carb / inlet manifold gasket, s/d	32-39	.75	ea
BE210	AC petrol pump Model T	34-39	54.60	ea
BE210d	AC petrol pump Model T diaphragm	34-39	11.40	ea
BE210t	AC petrol pump Model T top cap seal & washer	34-39	.95	ea
BA162	Petrol pump mounting stud	32-39	1.50	ea
BE124	Petrol pump / crankcase gasket	32-39	.45	ea
BE124p	Petrol pump aperture blanking plate	Special	1.70	ea
BE252	Fuel filler hose	34-39	11.20	ea
BE134	Rear petrol tank drain plug	33-39	4.90	ea
BE134m	Rear petrol tank drain plug with magnetic insert	33-39	8.30	ea
BE135	Rear petrol tank drain plug fibre washer	33-39	.60	ea
BF26	Accelerator shaft spring (up-draught carb)	23-32	4.60	ea
BF82	Accelerator shaft spring (side-draught carb)	32-39	4.50	ea
BF46j	Carburettor connecting link ball joint	34-39	10.90	ea
BE903	In-line fuel filter		1.60	ea
BT976	Petrol tank repair patch		8.60	ea
BT978	Ethanolmate petrol additive/corrosion inhibitor (treats 55 gal)	All	13.90	ea

Gaskets

BA901	Magneto engine gasket set	23-28	53.30	set
-------	---------------------------	-------	-------	-----

BM12	Control lever friction block	23-34	2.35	ea
BM13	Control lever screw	23-34	2.75	ea
BM14	Control lever spring	23-34	.95	ea
BM12c	Control lever blocks, screws & springs	23-34	12.00	set
BM129	Throttle control stator tube	23-34	16.10	ea
BM130	Ignition control stator tube	23-34	17.20	ea
BM136	Control bracket stator tube	All	14.80	ea
BM96a	Steering arm (incl. p&p)	All	75.00	ea
9C134a	Steering arm (lowered suspension)	Sports	75.00	ea
BM107c	Drag link set (ball pin, cups, spring, castle nut & split-pin)	All	14.60	ea
BM67	Brake pedal pivot shaft	All	8.50	ea
BM68	Brake pedal shaft taper washer	23-36	6.30	ea
BM70	Brake pedal pivot shaft nut	All	.40	ea
BN2	Nut for brake pedal shaft	All	.30	ea
BN3	Brake/clutch pedal metal pad	23-34	OOS	
BN4	Brake/clutch pedal pad conical nut	23-34	2.40	ea
BN903	Brake/clutch pedal rubber (Chummy/Box)	23-34	4.90	ea
BN96	Brake/clutch pedal rubber (Ruby)	34-39	4.90	ea
BF978	Accelerator pedal rubber	34-39	3.40	ea
BN96c	Pedal rubber set	34-39	13.20	set
BF26	Accelerator shaft spring (up-draught carb)	23-32	4.60	ea
BF82	Accelerator shaft spring (side-draught carb)	32-39	4.50	ea
BN39	Clutch pedal spring (3-speed gearbox)	23-32	4.90	ea

Shock Absorbers

BU5b	Front shock absorber centre bolt	25-39	7.00	ea
BU6	Nut & lock nut for BU5b	25-39	.60	ea
BU8	Star spring plate	25-39	4.25	ea
BU9	Friction disc (oiled beechwood)	All	6.70	ea
BU36	Front axle link bolt	27-37	6.20	ea
BU43c	Nuts & washers for BU36	27-37	.85	set
BU40	Domed link bolt with peg	25-39	4.90	ea
BU47	Nuts for above	25-39	.35	pair
BU34a	Centre bush (front/rear arm)	25-39	.75	ea
BU2r	Front shock absorber assembly (improved design)	All	120.00	ea
BU2s	Front shock absorber assembly (sports/racing)	Sports	138.00	ea
BU23	Rear shock absorber arm (long)	25-34	59.00	pair
BU24b	Rear shock absorber centre bolt	25-39	7.00	ea
BU25	Nut & locknut for BU24b	25-39	.80	pair
BU30	Spring plate	25-39	3.20	ea
BU65	Brass disc (rear only)	28-39	2.80	ea
BU27	Rear shock absorber spring	25-39	2.90	ea
BU28	Spring cup (inner)	25-39	1.90	ea
BU29	Spring cup (outer)	25-39	2.00	ea
BU49	Connecting link (front & rear, short – 1¼")	29-39	7.90	ea
BU66	Connecting link (Ruby etc rear, medium – 1½")	34-39	7.30	ea
B8-6	Connecting link (sports/export rear, long – 2¼")	Sports	6.90	ea
BU50	Rubber bush for connecting links	29-39	.90	ea
BU12	Fibre washer for BU50	25-39	.15	ea
BU14	Key washer	25-39	.45	ea

Wheels & Tyres

BS7c	Wheel centre (for 6" brake cars)	23-26	198.00	ea
------	----------------------------------	-------	--------	----

BR26c	Rear spring pin cotter, washer & nut	All	2.60	ea	BA902	Early Coil engine gasket set	28-30	48.90	set
BR80	Spring U-bolt (front)	All	16.20	ea	BA903	Middle Coil engine gasket set	30-32	48.60	set
BR21	Nuts for above	All	.20	ea	BA904	Late Coil engine gasket set	32-36	47.90	set
BR42	Front spring U-bolt tab washer	All	.45	ea	BA905	Late Ruby engine gasket set	36-39	49.20	set
BR77	Spring U-bolt (rear)	All	16.20	ea	BA918	Magneto engine felt seal set	23-28	5.75	set
BR30	Nuts for above	All	.20	ea	BA935	Crankcase fibre washer set (magneto / coil)	All	2.15	set
BR31	Rear spring U-bolt tab washer	All	.40	ea	BA3	Timing gear case gasket (magneto)	23-28	1.95	ea
BR75	Spring U-bolt stiffening plate (rear)	27-39	1.85	ea	BA6	Timing gear cover gasket (magneto)	23-28	1.95	ea
BR64c	Rear spring bolt & nut	All	4.20	ea	BA19	Starting dog felt housing gasket	23-28	1.05	ea
BR34	Rear spring bolt lockwasher	All	.45	ea	BA120	Nosecone gasket	28-39	.65	ea
BR63	Rear spring packing (thick)	All	1.60	ea	BA72	Sump gasket	All	1.15	ea
BR81	Rear spring packing (thin)	All	1.05	ea	BA103	Oil pump gasket	All	.45	ea
BM123	Radius arm ball joint	All	84.00	ea	BA43	Oil pump cover gasket	All	.35	ea
BM116	Radius arm ball pivot bushes	All	8.50	pair	BB11	Rear main bearing housing gasket (thin)	All	.25	ea
BM197	Radius arm waisted bolt	All	OOS		BB48	Oil seal plate gasket (thick)	All	.55	ea
BM196	Radius arm waisted bolt spring	34-39	2.95	ea	BC29	Cylinder head gasket (low comp head - Payens)	23-36	33.40	ea
BM114	Radius arm nut	All	2.90	ea	BC29r	Cylinder head gasket (Ricardo head)	Special	36.00	ea
BM115	Radius arm spring washer	All	.05	ea	1A912	Cylinder head gasket (high comp head - Payens)	36-39	34.70	ea
B8-63/4e	Radius arm ends for lowered suspension	Sports	142.00	pair	BC19	Water outlet manifold gasket (early)	23-36	.50	ea
9C161	Bolt, nut & spring washer for above	Sports	5.90	ea	9E45	Water outlet manifold gasket (late)	36-39	.45	ea
BR48c	Body mounting brackets	28-34	24.00	set	BC13	Cylinder block base gasket	All	.95	ea
BR947	Cow horn bracket	23-34	58.00	pair	BD48	Water inlet manifold gasket	All	.75	ea
BR948	Cow horn fixing bolts	23-34	.50	ea	BA34	Camshaft rear bearing gasket (early)	23-32	.25	ea
BR947u	Cow-horns for repro Ulsters built on LWB chassis	Special	65.00	pair	BA170	Camshaft rear bearing gasket (late)	33-39	.25	ea
BN25	Rear brake cable guide & nut	23-34	6.45	ea	BC38	Valve chest cover cork gasket	23-30	1.90	ea
BN121	Rear brake cable pulley	34-39	5.50	ea	BC72	Valve chest cover cork strip	30-39	1.80	ea
BN122	Clevis pin for above	34-39	.55	ea	BE22a	Inlet / exhaust manifold gasket	23-32	.75	ea
9E93	Rear brake cable brackets for use with flattened springs	Sports	4.00	pair	BE28	Carb / inlet manifold gasket, u/d	23-32	.40	ea
1A5374	Front bumper horseshoe bracket	34-39	35.30	ea	BE122a	Carburettor / manifold gasket, s/d	32-39	.75	ea
1A5523	Torque tube hanger brackets (late Ruby)	37-39	2.45	pair	BE29a	Exhaust manifold gasket	All	2.75	ea
2H1051	Silentbloc bush for torque tube socket	36-39	22.80	ea	BE52a	Exhaust flange gasket	All	1.75	ea
BR953	Rear axle bump stop (Box, etc)	31-34	6.50	ea	BE124	Petrol pump / crankcase gasket	32-39	.45	ea
BR153	Low frame rear axle bump stop	34-39	11.60	ea	BG102	Dynamo gasket	28-39	.30	ea
BX1	Straight grease nipple (1/8" BSP)	All	.55	ea	BG4	Dynamo housing gasket (magneto)	23-28	1.10	ea
BR51	Angled grease nipple (1/8" BSP)	All	.75	ea	BG106	Dynamo housing gasket (coil)	28-39	.40	ea
2H1129	Angled grease nipple (5/16" BSF for Girling front axle)	36-39	.95	ea	BG113	Dynamo housing cover gasket	28-39	.25	ea
Steering & Pedals					BT973	Blue Hylomar		6.60	tube
BM24r	Raked steering box (Ulster/Cup)	Sports	205.00	ea	TRANSMISSION				
BM17c	Steering column clamp bracket	24-30	21.60	ea	Flywheel & Clutch				
9E917c	Steering column clamp bracket (Ulster)	Sports	34.60	ea	BJ2	Rear crankshaft key	All	.90	ea
BM133	Steering column top felt bush	28-39	1.40	ea	BJ3	Flywheel nut (1 1/8")	23-29	3.90	ea
BM37	Steering box adjuster lockwasher	23-36	.25	ea	BJ4	Flywheel nut lockwasher (1 1/8")	23-29	.35	ea
BM52a	Steering box double tab washer	23-36	.45	ea	BJ29	Flywheel nut (1 5/16")	29-39	3.90	ea
BM53	Steering box cover bush	23-36	19.50	ea	BJ30	Flywheel nut lockwasher (1 5/16")	29-39	.35	ea
BM54	Steering box cover felt seal	23-36	.55	ea	BJ24g	Starter ring gear, shrink-on replacement (early)	24-32	49.50	ea
2K5288	Steering box cover cork seal	36-39	.55	ea	BJ31g	Starter ring gear, shrink-on replacement (late)	32-39	49.50	ea
BM56	Steering box cover gasket	23-36	.50	ea	BJ21	Clutch thrust bearing (3-speed gearbox)	23-32	125.00	ea
BM74/75	Horn button & spring (state nickel or chrome)	25-34	19.50	ea	BJ41	Clutch thrust race (4-speed gearbox)	32-39	59.50	ea
BM3	Steering wheel clamp bolt	23-28	.55	ea	BJ7	Clutch centre plate rivets	23-36	1.60	set
BM127	Steering wheel retaining nut	28-39	1.90	ea	BJ8-1c	Clutch linings, c/w rivets (6 rivets/lining)	23-31	18.20	set
BM128	Gas/ignition control plate	23-32	30.30	ea					

BJ8-2c	Clutch linings, c/w rivets (12 rivets/lining)	31-36	27.20	set	BG87r	Rear lamp with high visibility lens (Chummy/Box)	23-33	43.60	ea
1A3238c	Clutch linings, c/w rivets (Borg & Beck)	36-39	19.60	set	BG87a	As BG87r but with amber lens		37.50	ea
1A3244c	Clutch linings, c/w rivets (Newton Bennett)	1938	19.70	set	BG87g	Replacement glass for rear lamp with prismatic lens	23-33	9.60	ea
BJ9c	Clutch lining rivets	23-36	3.90	set	BG987	Improved visibility lens for rear lamp	23-34	8.65	ea
BT925	Rivet punch	All	21.60	ea	BG988	Bracket for rear lamp	23-34	10.40	ea
BJ12	Clutch pressure springs	All	7.80	set	BG197	Rear light ('pork-pie' type; late Box, Ruby, etc.)	33-39	49.80	ea
9E912	Double (inner) clutch springs	Sports	8.40	set	BG197g	Replacement glass for 'pork-pie' lamp	33-39	8.65	ea
BJ14	Clutch levers (3-speed gearbox)	23-32	25.90	set	BG197i	'Pork pie' rear lamp converted for stop/tail/indicator	33-39	89.00	ea
BJ33	Clutch levers (4-speed gearbox)	32-39	25.90	set	BG905	Auxiliary stop/tail lamp		17.10	ea
BJ13	Clutch lever posts	23-36	22.70	set	BG980	Indicator system (4 lamps [state orange or clear lens] with mounting brackets, 4 bulbs [state 6V or 12V, clear or orange], column mounted switch, flasher/buzzer unit. Suitable for positive or negative earth)	All	105.70	set
BJ15	Clutch lever pins	All	1.80	set	BG907	Direction indicator lamp (state orange or clear lens)		18.70	ea
BJ35	Clutch mouse-trap springs	32-39	4.20	set	BG983	Indicator switch (steering column)		16.40	ea
BJ40	Spring clip for withdrawal collar (second-hand)	32-39	2.40	ea	BG984	6V flasher unit		6.80	ea
BJ43	Clutch thrust spring (2nd-hand)	32-39	3.70	ea	BG984a	12V flasher & buzzer unit		8.50	ea
BJ45	Collar for above (2nd hand)	32-39	2.40	ea	BG985	Indicator buzzer		4.80	ea
BJ17	Clutch cover plate bolt (early)	23-32	.45	ea	BG982	Reflector, chrome bezel 2" dia, rear stud fixing		11.90	ea
BJ37	Clutch cover plate bolt (late)	32-39	.40	ea	BG307	Lucas pattern brake light switch	34-39	18.90	ea
BJ18	Clutch cover plate tab-washer	All	.25	ea	BG307a	Brake light switch & cover	34-39	10.20	ea
BJ18c	Clutch cover plate tab-washers (6)	All	1.40	set	BG921	6V 25/25W SBC halogen headlight bulb	29-39	11.00	ea
BT921	Clutch cover plate assembly bolt	All	.40	ea	BG922	6V 30/24W pre-focus bulb		5.50	ea
BN3	Clutch pedal pad	23-34	12.30	ea	BG923	6V 24/24W SBC headlamp bulb		2.40	ea
BN4	Conical nut for pedal pad	23-34	5.50	ea	BG923p	6V 21/5W bulb (parallel pins)		2.25	ea
BN36c	Clutch pedal cotter, washer & nut	23-32	2.60	ea	BG923o	6V 21/5W bulb (offset pins)		1.45	ea
BN39	Clutch pedal spring (3-speed gearbox)	23-32	4.90	ea	BG924c	6V 5W SCC bulb		1.25	ea
BA166	Flywheel pit cover (2nd-hand)	32-39	7.70	ea	BG924b	6V 5W SBC bulb		1.25	ea
BT920	Flywheel puller	All	15.60	ea	BG926	6V 5W small bulb for repro sidelight	34-39	1.75	ea
Gearbox					BG927	6V 10W SCC bulb		1.25	ea
BH85	Clutch pedal shaft taper pin	All	1.45	ea	BG928	6V 21W SCC bulb		1.25	ea
BH3c	Gasket set (3-speed gearbox – early)	23-27	4.60	set	BG928a	6V 18W SCC bulb (amber)		1.90	ea
BH125c	Gasket set (3-speed gearbox – late)	27-32	4.45	set	BG247b	Panel light bulb (6V 3W SCC)		1.50	ea
BH6	Top cover gasket (3-speed gearboxes)	23-32	.90	ea	BG929	6V 5W festoon bulb for trafficators		1.25	ea
BH7	Top cover studs (3-speed gearboxes)	23-32	1.15	ea	BG930	Bulb holder to fit 15mm diameter parallel pin bulb		4.50	ea
BH8/9	Nuts & spring washers for above	23-32	.60	set	BG931	Bulb holder to fit 15mm diameter SCC bulb		4.70	ea
BH16	Gear-lever gate gasket (3-speed gearbox)	23-29	.70	ea	BG933p	12V 21/6W bulb (parallel pins)		2.65	ea
BH17	Gear-lever gate screw	23-29	.85	ea	BG933o	12V 21/6W bulb (offset pins)		1.60	ea
BH141c	Gasket set (4-speed crash gearbox)	32-33	OOS		BG936	12V 4W small bulb for repro sidelight		1.00	ea
BH226c	Gasket set (4-speed synchro gearbox)	33-39	4.50	set	BG937	12V 10W SCC bulb		.90	ea
BH226	Top cover gasket (4-speed synchro gearbox)	33-39	1.00	ea	BG938	12V 21W SCC bulb		1.25	ea
BH142	Top cover bolts (4-speed gearboxes)	32-39	.35	ea	BG938a	12V 21W SCC bulb (amber)		1.80	ea
BH19	Inspection cover screw	23-32	.35	ea	BG952	Lucas trafficator base seal	34-39	3.20	ea
BH58a	Front oil lip seal (modern replacement)	23-29	2.80	ea	CHASSIS				
BH66	Rear felt seal (3-speed)	23-32	1.70	ea	BR13c	Spring shackles (c/w grease nipples, nuts & tab washers)	All	98.60	axle
BH42	1st motion shaft ball bearing (3-speed)	23-32	21.30	ea	BR14	Spring shackle pin bush	All	2.95	ea
BH56	1st motion shaft bearing rollers (3-speed)	23-32	3.95	set	BR15	Spring shackle nuts	All	.20	ea
BH43	3rd motion shaft ball bearing (3-speed)	23-32	25.20	ea	BR17	Spring shackle lockwasher	All	.25	ea
BH44	Layshaft ball bearings (3-speed)	23-32	16.00	ea	BR58	Rear spring/shock absorber pin	24-39	18.80	ea
BH179	1st motion shaft ball bearing (4-speed crash)	32-33	13.00	ea	BR59	Nut & locknut for above	24-39	.35	pr
BH181	3rd motion shaft ball bearing (4-speed crash)	32-33	25.20	ea	BR24	Rear spring pin bush	All	3.25	ea
BH254	1st motion shaft ball bearing (4-speed synchro)	33-39	23.60	ea					
BH258	3rd motion shaft ball bearing (4-speed synchro)	33-39	29.80	ea					
BH178b	Intershaft bush (replaces roller bearing)	33-39	9.10	ea					

2H161	Wiring harness saddle	34-39	6.50	ea
Ignition				
BA93	Vernier coupling (mag engine)	23-28	12.30	ea
BA94	Magneto fixing strap	23-28	30.20	ea
BA100c	BLIC magneto end cap (nickel)	23-28	19.50	ea
BA22	Magneto switch	23-26	37.80	ea
BF23	Advance/retard control rod ball joint	23-28	10.90	ea
BG918	Spark plug, Champion 18mm	23-36	5.75	ea
BG917	Spark plug, NGK 18mm	23-36	6.20	ea
BG914	Spark plug, NGK 14mm	37-39	3.00	ea
BG919	Spark plug knurled nut (brass)	All	1.20	ea
BD57	HT lead spade end terminal	All	1.55	ea
BD230	HT lead, black plastic, copper core	All	.70	foot
BD230b	HT lead, yellow/black braided, copper core	All	1.55	foot
BG139	6 volt coil (c/w acorn nut & split washer)	28-39	21.00	ea
BG939	12 volt coil (c/w acorn nut & split washer)	Special	21.00	ea
BG139a	Long acorn nut for ignition coil	28-39	1.25	ea
BG139t	Straight push-in terminal for coil or distributor cap	28-39	1.75	ea
BG139r	Rubber insulator cover for coil or distributor cap	28-39	.30	ea
BG140c	Distributor cap (c/w short acorn nuts & split washers)	28-39	29.90	ea
BG140a	Short acorn nut for distributor cap	31-39	.60	ea
BD230w	HT lead terminal split washer	28-39	.45	ea
BG140p	Contact breaker points (DJ4)	31-34	11.60	ea
BG294p	Contact breaker points (DK4)	34-39	11.40	ea
BG140t	'Top hat' bushes for points (DJ4/DK4)	31-39	2.60	pair
BG140d	Condenser	28-39	12.20	ea
BG140r	Rotor arm (DJ4)	31-34	10.80	ea
BG294r	Rotor arm (DK4)	34-39	10.70	ea
BG294b	Distributor base plate (DK4)	34-39	29.90	ea
BG294u	DK4 spindle bush	34-39	4.95	ea
BG140g	Distributor gear (Lucas)	28-39	19.50	ea
BG294g	Distributor gear (Bosch)	28-39	14.40	ea
BG154g	Dynamo to distributor gear	29-39	18.00	ea
BG315a	PLC5 ignition switch (incl. keys & mounting clip)	34-39	69.90	ea
BG160c	Ignition switch retaining wire clip and gasket	32-39	5.40	ea
BG160k	Ignition spade key	32-39	.95	ea
BG115b	Ignition bulb (6V)	28-32	1.10	ea
BG163a	Ignition warning light (6V)	32-39	18.80	ea
BG163b	Ignition bulb (2.5V)	32-39	.90	ea
BT983	Ignition spark tester		5.30	ea
Lamps				
BG310g	Headlamp glass (Ruby, etc)	34-39	51.90	ea
BG193c	Headlamp glass wire retaining clip		.25	ea
BG193p	Headlamp swivel cup $\frac{5}{8}$ " hole	23-34	3.00	ea
BG193q	Headlamp swivel cup (Ruby)	34-39	3.00	ea
BG193h	Headlamp hollow bolt $\frac{5}{8}$ " dia, nuts, washers, etc	29-34	9.60	ea
BG193b	Headlamp bolt & nut	34-39	11.90	ea
BG263	Foot operated dip switch	34-39	21.60	ea
BG262	Front side light	34-39	48.90	ea
BG262q	Front side light swivel cup	34-39	3.00	ea
BG87	Rear lamp with prismatic lens (Chummy/Box)	23-33	66.50	ea

BH34	Selector arm fulcrum plate screws	23-32	.35	ea
BH36/37	Selector ball & spring	All	1.25	pair
BH269/70	Synchromesh ball & spring	33-39	.70	pair
BH69	Layshaft (3-speed)	23-32	17.50	ea
BH73/74	Layshaft keys (long & short)	23-32	2.20	pair
BH115	Gearlever knob (small)	29-32	9.00	ea
BH235	Gearlever knob (large)	32-39	9.40	ea
2H7145	Gear lever cover grommet	35-39	12.40	ea
BH30	Gearbox drain plug	All	4.90	ea
BH30m	Gearbox drain plug with magnetic insert	All	8.30	ea
BH29/31	Drain plug fibre washer	All	.60	ea
Speedometer drive				
BH102	Speedo cable drive pinion (3-speed)	27-32	20.40	ea
BH203	Speedo cable drive pinion (4-speed)	32-39	20.40	ea
BG49	Speedometer drive spring belt	24-27	7.70	ea
BG45	Speedo cable 45" (belt-driven)	24-27	27.40	ea
BG94	Speedo cable 14 $\frac{1}{2}$ "	1927	26.70	ea
BG92	Speedo cable 16 $\frac{1}{2}$ "	27-32	26.80	ea
BG92c	Speedo cable 17 $\frac{1}{2}$ " (Coupe, etc)	29-31	26.90	ea
9E92	Speedo cable 22"	Ulster	27.20	ea
BG172	Speedo/rev counter cable 45"	Special	27.40	ea
BG277	Speedo cable 51" Magmo (barrel) type speedo	34-35	27.60	ea
2H1847	Speedo cable 48" Nemag (needle) type speedo	36-39	27.50	ea
BG44b	Balls for Smiths speedometers (MA/PA, etc)	24-32	4.80	set
Propshaft				
BP29	Fabric coupling	23-34	36.00	ea
BP57	Fabric coupling double-ended bolt	23-34	3.70	ea
BP58/9	Special nuts for BP57	23-34	.95	pair
BP60	Lockwasher for BP58/9	23-34	.40	ea
BP61	Split-pins for BP58/9	23-34	.25	set
BP11c	Cardan pin and blocks	23-33	29.90	set
BP119a	Cardan joint cover (rubber)	23-33	4.90	ea
BP20	Cardan housing lockwasher	23-33	.25	ea
BP73s	Hardy-Spicer propshaft to fit SWB cars (gearbox spider to Cardan joint flange)	Special	225.00	ea
BP118s	Hardy-Spicer propshaft to fit LWB cars (gearbox spider to Cardan joint flange)	32-33	225.00	ea
BP125s	Hardy-Spicer propshaft to fit LWB cars (gearbox spider to 6-hole flange)	33-34	225.00	ea
BP957	Fixing bolts & nyloc nuts for gearbox spider	Special	3.20	set
BP918	Fixing bolts & nyloc nuts for Cardan joint flange	Special	3.30	set
1A7306	Hardy-Spicer propshaft	34-39	169.00	ea
BP169	Hardy-Spicer u/j needle bearing assembly	34-39	12.25	ea
BP143	Propshaft D-head bolt (early)	33-35	1.85	ea
BP144	Nuts for above	33-35	.05	ea
BP145	Lockwashers for above	33-35	.25	ea
BP171	Propshaft D-head bolt (late)	35-39	2.20	ea
BP172	Lockwashers for above	35-39	.25	ea
BP173	Nuts for above	35-39	.10	ea

BRAKES

BL57	Brake lever	26-36	15.80	ea
BL99	Brake lever, longer Austin	35-36	16.70	ea
1A4133	Brake lever, Girling seal type	36-39	16.80	ea
BL35c	Brake lever cotter, washer & nut (Austin/Girling)	All	2.60	ea
2K5213	Brake lever felt seal	37-39	.45	ea
BL76/77	Brake cams	23-36	29.20	pair
BL69	Brake cam oilite bush	23-36	1.80	ea
1A4130/1	Brake cams (Girling, front)	36-39	29.50	pair
1A7263/4	Brake cams (Girling, rear)	36-39	29.50	pair
1A4126	Brake cam oilite bush (Girling)	36-39	2.15	ea
BL38	Brake shoe spring (6")	23-26	2.10	ea
BL58	Brake shoe spring (7")	26-36	1.10	ea
1A4141	Brake shoe spring (for Girling shoes with studs)	36-37	1.95	ea
1A4655	Brake shoe spring (for Girling shoes without studs)	37-39	1.65	ea
1A4150c	Brake lever springs (Girling)	36-39	15.60	set
BT958	Brake shoe spring hook	All	10.60	ea
BL27	Brake linings & rivets (6")	23-26	21.90	axle
BL55	Brake linings & rivets (7"x1")	26-32	20.90	axle
BL73	Brake linings & rivets (7"x1¼")	32-36	21.90	axle
BL56	Rivets for 7" Austin brake linings	26-36	3.10	set
1A4120	Brake linings & rivets (Girling)	36-39	22.80	axle
BT925	Rivet punch	All	21.60	ea
BL29	Brake shoe pivot (long, threaded)	23-30	4.55	ea
BL68	Brake shoe pivot (front, rivetted)	30-36	4.55	ea
BO77	Brake shoe pivot (short, threaded)		4.55	ea
BL942	Brake backplate (6") c/w rivets	23-26	20.70	ea
BL965	Brake backplate (7") c/w rivets	26-36	17.40	ea
BL966	Set of rivets for above	23-36	1.20	set 6
2K5258	Girling backplate lockwasher	36-39	.45	ea
BL54	Brake shoe (7"x1")	26-32	8.20	ea
BL72	Brake shoe (7"x1¼")	32-35	15.70	ea
C1-167	Brake shoe (7"x1¼" – offset pivot)	35-36	13.25	ea
C1-188/9	Brake shoe (Girling, with spring anchor studs)	36-37	9.60	pair
C1-312	Brake shoe (Girling, without studs)	37-39	9.80	ea
BL954	End caps for aluminium brake shoes	26-35	3.15	set 4
BL53	Brake drum (7" x 1")	26-32	7.65	ea
BL71	Brake drum (7" x 1¼")	32-36	14.40	ea
1A4115	Brake drum (Girling)	36-39	40.80	ea
BL67	Brake drum retaining countersunk screw	28-39	.35	ea
BK31	Front brake cable	All	29.20	ea
BK31a	Front brake cable (adjustable)	All	36.80	ea
BN65	Rear brake cable (fork-ball, adjustable, with clevis pin)	23-36	29.60	ea
BN119	Rear brake cable (fork-fork, adjustable, with clevis pins)	36-39	29.80	ea
BN18	Brake cable clevis pin	All	.65	ea
BN40a	Adjustable brake cable clamp stud & nut	All	1.70	ea
BN25	Rear brake cable guide & nut	23-34	6.45	ea
BN121	Rear brake cable pulley	34-39	5.50	ea
BN122	Clevis pin for above	34-39	.55	ea
BN965	Brake cable adjuster		7.00	ea
BK41	Handbrake pawl	29-31	3.20	ea

BG29k	CAV DF/DFL dynamo Woodruff key	23-28	1.25	ea
BG29c	CAV DF/DFL dynamo end cover	23-28	40.50	ea
BG8	CAV DF/DFL dynamo securing oiler/bolt	23-28	5.70	ea
BG13	CAV DF/DFL front felt seal	23-28	1.20	ea
BG98b	CAV DE/DEL dynamo brushes	28-32	6.50	set 3
BG98f	CAV DE/DEL front bearing	28-32	6.25	ea
BG98r	CAV DE/DEL rear bearing	28-32	3.95	ea
BG154b	Lucas C35A dynamo brushes	32-34	5.90	set 3
BG293b	Lucas C35M dynamo brushes	34-39	6.50	set 3
BG154f	Lucas C35A / C35M front bearing	32-39	4.65	ea
BG154r	Lucas C35A / C35M rear bush	32-39	1.30	ea
BG53b	'Bacon slicer' starter motor brushes (CAV, 'lozenge' switch)	23-26	7.80	set 2
BG953b	'Bacon slicer' starter motor brushes (Lucas, round switch)	26-29	5.90	set 2
BG88	'Bacon slicer' starter motor switch	23-29	35.90	ea
BG53f	'Bacon slicer' starter motor front bearing	24-29	3.90	ea
BG76a	'Bacon slicer' starter terminal cover	23-29	4.75	ea
BG715	'Bacon slicer' starter Bendix spring	23-29	21.60	ea
BG56	Bacon-slicer starter bolt & spring washer	23-29	.85	ea
BG173b	Direct drive starter motor brushes	29-39	5.90	set 2
BG173c	Spring clip for pinion, direct drive starter motor	29-39	3.25	ea
BG173s	Starter switch (starter motor under bonnet)	32-39	30.50	ea
BG3	Dynamo housing (magneto engine)	23-28	45.00	ea
BG4	Dynamo housing gasket (magneto engine)	28-39	1.10	ea
BG106	Dynamo housing gasket (coil engine)	28-39	.40	ea
BG99	Dynamo fixing bolts	28-39	.40	ea
BG100	Dynamo fixing bolt	28-39	.35	ea
BG112	Dynamo housing cover	28-39	.75	ea
BG113	Dynamo housing cover gasket	28-39	.25	ea
BG112b	Dynamo housing cover bolt (second-hand)	28-39	.25	ea
BG102	Dynamo gasket	28-39	.30	ea
BG141	Dynamo housing long bolt	28-39	3.40	ea
BM74/75	Horn button & spring (state nickel or chrome)	25-34	19.50	ea
BG83b	Rist horn badge	27-36	5.20	ea
BD78	Starter/battery cable (heavy duty)	All	2.90	foot
BD95	Battery terminal clamp, positive	All	2.35	ea
BD96	Battery terminal clamp, negative	All	2.35	ea
BD86	Battery cable terminal	All	1.95	ea
BD80	Tinned copper earthing braid	All	3.60	foot
BG901a	Battery/ignition isolator switch (red)	All	9.50	ea
BG901k	Spare key for above		1.10	ea
BG901b	Battery/ignition isolator switch (green)	All	11.50	ea
BT988	Battery hydrometer		2.40	ea
BT989	Battery post & terminal cleaner		2.30	ea
BG941	10A 1" glass fuse		.50	ea
BG942	25A 1" glass fuse		.70	ea
BG944	In-line fuse holder with 20A fuse	All	.95	ea
BG945	20A 1¼" glass fuse	All	.50	ea
BG971	6V 10A DPDT relay (double pole double throw)		11.20	ea
BG972	12V 10A DPDT relay		10.30	ea
BD123c	Cable grommet pack (21 assorted)	All	3.90	ea
BD289	Double wiring clip		.55	ea

BO11	Back axle drain plug	All	4.90	ea
BO11m	Back axle drain plug with magnetic insert	All	8.30	ea
BO12	Drain plug fibre washer	All	.60	ea
BO74	Winkley pattern oiler	23-	11.00	ea
BP32	Pinion flange nut	23-39	.30	ea
BP33	Pinion flange nut tab washer	All	.30	ea
BP34	Pinion shaft Woodruff key	23-39	.70	ea
BP16	Pinion flange adjusting nut lockwasher	23-30	.40	ea
BP116	Pinion bearing retaining nut lockwasher	31-39	.35	ea
BP107	Torque tube to axle case shims, 6 thou (pack of 6)	as required	3.00	pack
BP71	Torque tube bracket thin locknut	23-36	5.20	ea
BP70	Torque tube bracket locknut tab washer	23-36	.50	ea
BP23	Torque tube front felt seal	23-29	1.15	ea
1A5523	Torque tube hanger brackets (late Ruby)	37-39	2.45	pair
2H1051	Silentbloc bush for torque tube socket	36-39	22.80	ea
BO903e	Back axle rebuild kit (early banjo axle)	23-26	29.40	ea
BO903v	Back axle rebuild kit (vintage banjo axle)	26-29	27.40	ea
BO903s	Back axle rebuild kit (screw-in torque tube axle)	29-30	24.60	ea
BO903b	Back axle rebuild kit ('Long-nose' banjo axle)	30-32	26.40	ea
BO903d	Back axle rebuild kit (D-type axle)	32-38	24.40	ea
BO903h	Back axle rebuild kit (late 'heavy' axle)	38-39	24.80	ea

Back axle bearings

BO51	Hub bearing (taper bore)	23-26	OOS	
BO89	Hub bearing	26-38	8.20	ea
BO89s	Hub bearing (sealed)	26-38	9.80	ea
2K5678	Hub bearing (late axle)	38-39	8.70	ea
2K5678s	Hub bearing (late axle - sealed)	38-39	9.90	ea
BP27	Front (taper) end (ball)	23-29	16.90	ea
BP27s	Front (taper) end ball bearing (sealed)	Special	38.50	ea
BP81	Front (taper) end (A/C)	29-30	35.70	ea
BP96	Front (taper) end (ball)	30-39	16.90	ea
BP96s	Front (taper) end ball bearing (sealed)	Special	38.50	ea
BP26	Intermediate (thrust)	23-29	28.70	ea
BP84	Intermediate (thrust)	29-30	17.60	ea
BP101	Intermediate (AC thrust)	30-38	144.00	pair
2K5536	Intermediate (heavy axle)	38-39	OOS	
BP25	Gear end (roller)	23-29	42.50	ea
BP85	Gear end (ball)	29-34	25.20	ea
BP183	Gear end (roller)	34-38	66.80	ea
2K5585	Gear end (roller - heavy axle)	38-39	47.50	ea
BO37	Diff carrier thrust	23-28	36.30	ea
BO36	Diff carrier ball	23-28	21.30	ea
BO109	Diff carrier AC thrust	29-38	55.90	ea
2K5708	Diff carrier (heavy axle)	38-39	OOS	

ELECTRICAL

BG2	CAV DF/DFL/DE dynamo drive gear	23-28	48.00	ea
BG1b	CAV DF dynamo brushes	1923	6.50	set 3
BG29b	CAV DFL dynamo brushes	23-28	6.50	set 3
BG29f	CAV DFL front bearing	23-28	8.00	ea
BG29r	CAV DFL rear bearing	23-28	3.95	ea

BK25	Handbrake ratchets (uncoupled brakes)	23-30	6.20	pair
BK49	Handbrake ratchets (coupled brakes)	30-39	6.70	pair
BK14	Handbrake pivot	23-30	3.25	ea
BK15	Nut for above	23-30	.10	ea
BK17	Handbrake bracket clevis pin	23-30	.60	ea
BK52	Front brake cable swivel (Box, etc)	30-34	7.60	ea
1A5152	Front brake cable swivel (Ruby, etc)	34-39	7.60	ea
BK68c	Front brake swivel fork, pin & nut	30-39	32.40	ea
BK55	Front brake cable swivel clevis pin	30-39	.70	ea
BK66	Handbrake adjusting wingnut	30-39	9.80	ea
BK72	Handbrake roller joint pin	30-39	.65	ea
BK943	Handbrake gaiter (Box, etc; various colours)	30-34	13.00	ea
3A9097	Handbrake gaiter (Ruby, etc; various colours)	34-39	15.60	ea
BK944	Handbrake gaiter plate (Box, etc)	30-34	1.95	ea
BN2	Brake pedal pivot shaft nut	All	.30	ea
BN3	Brake pedal pad	23-32	12.30	ea
BN4	Conical nut for pedal pad	23-32	5.50	ea
BM67	Brake pedal pivot shaft	All	8.50	ea
BM68	Brake pedal shaft taper washer	23-36	6.30	ea
BM70	Brake pedal pivot shaft nut	All	.40	ea
BN5a	Brake pedal jaw (yoke)	All	6.20	ea
BN6	Brake pedal clevis pin	All	.65	ea
BN8	Brake pedal rod (uncoupled brakes, 11½")	23-30	4.60	ea
BN45	Brake pedal rod (coupled brakes)	30-39	4.60	ea
BN9	Brass wingnut (foot brake adjustment)	23-36	9.80	ea
1A7633	Girling rear brake expander rubber boot	38-39	5.95	ea
BG307	Lucas pattern brake light switch	34-39	18.90	ea
BG307a	Brake light switch & cover	34-39	10.20	ea
BN12	Cross-shaft spring, uncoupled brakes	23-30	4.50	ea
BN49	Cross-shaft spring, coupled brakes	30-32	3.25	ea
BN73	Cross-shaft spring, coupled brakes	32-38	5.20	ea
BN59	Cross-shaft bush (1" ID, 1 ¹ / ₁₆ " OD)		5.90	ea
BN71	Cross-shaft bush (1 ¹¹ / ₆₄ " OD, 1¼" OD)		6.50	ea
BN61c	Cross-shaft cotter, washer & nut	30-39	2.60	ea
9E93	Rear brake cable brackets for use with flattened springs	Sports	4.80	pair

FRONT AXLE

BM96a	Steering arm (incl. p&p)	All	75.00	ea
9C134a	Steering arm (lowered suspension)	Sports	75.00	ea
BL9c	Kingpin set (kingpins, bushes, thrust washers, cotters, etc)	23-36	42.60	set
BL9	Kingpin, Austin (std, +.002", +.005", +.010", +.015", +.025")		9.90	ea
1A4134c	Kingpin set (as BL9c, Girling)	36-39	44.50	set
1A4134	Kingpin, Girling (std, +.002", +.005", +.010", +.015", +.025")		9.90	ea
BL906	Pack of hardened shim washers (2 x 40 thou & 2 x 20 thou)		.60	pack
BL10c	Kingpin cotter, nut & washer	All	2.00	ea
BL48	Kingpin threaded cap	23-36	2.50	ea
1A4135	Front hub Welch plug	36-39	.50	ea
BT924	Kingpin greaser	23-36	9.20	ea
BT926	Kingpin extractor tool	All	25.90	ea
BT969p	½" parallel reamer		23.00	ea
BT968t	Tap for top of Austin stub axle (kingpin cap)	23-36	19.20	ea
BL41	Hub bearing (small)	All	5.20	ea

BL41s	Hub bearing (small – sealed)	All	5.90	ea
BL40	Hub bearing (taper bore)	23-26	OOS	
BL63	Hub bearing (large)	26-39	8.20	ea
BL63s	Hub bearing (large – sealed)	26-39	9.80	ea
BL62	Hub felt seal	All	1.90	ea
BL62a	Hub lip seal (modern replacement)	26-39	2.90	ea
BL18a	Hub lip seal (early)	23-26	3.60	ea
BL17	Hub felt seal plate	All	1.25	ea
BL20	Hub bearings spacer (2nd-hand)	All	2.95	ea
BL23	Wheel stud (EN24) & rivets	All	4.55	ea
BL46	Hub gasket	All	.50	ea
BL4	Front hub castle nut	All	5.10	ea
BL5	Split pin for above	All	.05	ea
BL19	Hub-clamping screw	23-28	.35	ea
BL21	Front hub cap with Austin script	23-26	7.80	ea
BL100	Front hub cap (2nd-hand)	26-39	4.90	ea
BL45	Outer hub grease plug	All	1.00	ea
BR13c	Spring shackles (c/w grease nipples, nuts & tab washers)	All	98.60	axle
BR14	Spring shackle pin bush	All	2.95	ea
BR15	Spring shackle nuts	All	.20	ea
BR17	Spring shackle lockwasher	All	.25	ea
BM123	Radius arm ball joint	All	84.00	ea
BM116	Radius arm ball pivot bushes	All	8.50	pair
BM197	Radius arm waisted bolt	All	OOS	
BM196	Radius arm waisted bolt spring	34-39	2.95	ea
BM114	Radius arm nut	All	2.90	ea
BM115	Radius arm spring washer	All	.05	ea
B8-63/4e	Radius arm ends for lowered suspension	Sports	142.00	pair
9C161	Bolt, nut & spring washer for above	Sports	5.90	ea
BM107c	Drag link set (ball pin, cups, spring, castle nut & split-pin)	All	14.60	set
BM102	Drag link bolt	All	.40	ea
BM84c	Track rod end set Track rod end set (pins, bushes, shims, cotters, washers & nuts)	All	13.60	set
BM84	Track rod end pin	All	3.40	ea
BM95	Track rod end bush	All	1.95	ea
BM95o	Track rod end bush +.015" OD	All	1.95	ea
BM85c	Track rod end cotter, washer & nut	All	2.60	ea
BM904	Track rod end shim (20 thou)	All	.25	pair
BM88	Track rod end clamp bolt	All	.45	ea
BM93	Track rod lever nut	All	.30	ea
BM94	Spring washer for BM93	All	.05	ea
BU36	Front axle link bolt	27-37	6.20	ea
BX1	Straight grease nipple (1/8" BSP)	All	.55	ea
BR51	Angled grease nipple (1/8" BSP)	All	.75	ea
2H1129	Angled grease nipple (9/16" BSF for Girling front axle)	36-39	.95	ea
BS6	Wheel nut (manganese bronze)	All	2.50	ea
BS6s	Wheel nut (stainless steel)	Special	3.25	ea

BACK AXLE

BP31k	Crown wheel & pinion (4.9:1, early/late crown-wheel)	23-29	435.00	set
BP88k	Crown wheel & pinion (4.9:1 'screw-in' torque tube)	29-30	435.00	set

BP98k	Crown wheel & pinion (4.9:1, short pinion shaft)	30-31	435.00	set
BP117k	Crown wheel & pinion (5.25:1)	31-37	435.00	set
BP178k	Crown wheel & pinion (5.25:1, 1 1/8" shoulder)	31-37	435.00	set
BP120k	Crown wheel & pinion (5.67:1)	Special	435.00	set
Other ratios are available to special order – please ring.				
BO18	Halfshaft (short, .875 journal)	23-30	177.60	ea
BO128	Halfshaft (short, .890 journal)	31	177.60	ea
BO136	Halfshaft (long)	31-38	177.60	ea
BO128t	Halfshaft (short, extended taper, .890 journal)	Special	184.00	ea
1A7300a	Halfshaft (long, extended taper)	31-39	186.90	ea
BO22	Halfshaft Woodruff key	All	2.20	ea
1A7212a	Key for long-taper halfshaft	Special	1.20	ea
BO19	Halfshaft castle nut (small)	23-31	4.95	ea
BO138	Halfshaft castle nut (large)	31-38	6.30	ea
2K6952	Halfshaft nut (late axle)	38-39	7.60	ea
BO21	Halfshaft split pin	All	.05	ea
BO43	Halfshaft felt seal	23-38	1.45	ea
BO43a	Halfshaft lip seal (modern replacement)	23-29	2.40	ea
BO43b	Halfshaft lip seal (replaces felt washer & steel cup, etc)	29-38	2.15	ea
BO43c	Larger version of BO43b lip seal for some axle casings	29-38	2.40	ea
BO901	Halfshaft replacement kit (gaskets, tab washers, Woodruff key, lip seals, etc)	All	11.50	ea
BO45	Rear hub, outer (EN24T)	23-38	105.60	ea
1A7661a	Rear hub, outer (extended taper)	Special	108.00	ea
BO46	Rear hub cap with Austin script	23-26	19.50	ea
BO75	Hub gasket	All	.50	ea
BO88	Hub felt seal	All	1.90	ea
BO88a	Hub lip seal (modern replacement)	26-38	2.90	ea
BO48a	Hub lip seal (early)	23-26	3.60	ea
2K5710	Hub felt seal (late axle)	38-39	1.75	ea
2K5710a	Hub lip seal (late axle - modern replacement)	38-39	3.00	ea
BO47	Hub felt seal plate	All	1.25	ea
BO78	Outer hub grease plug	All	1.00	ea
BO92	Hub-clamping screw	23-38	.35	ea
BO52	Hub retaining nut	23-38	5.20	ea
BO53	Hub retaining nut tab washer	23-38	.45	ea
2H2381	Hub bearing retaining nut tab washer (late axle)	38-39	.60	ea
BT952	Hub bearing retaining nut box spanner	23-38	14.60	ea
BT24	Hub puller	All	14.20	ea
BO902	Rear hub rebuild kit (gasket, tab washer, Woodruff key, lip seal, split pin)	All	5.90	ea
BO54	Wheel stud & rivets	All	4.55	ea
BS6	Wheel nut (manganese bronze)	All	2.50	ea
BS6s	Wheel nut (stainless steel)	Special	3.25	ea
BO23	Diff carrier / halfshaft bush (0.875")	23-31	3.35	ea
BO98	Diff carrier tab washer	28-39	.40	ea
BO28	Early diff carrier tab washer	23-28	.25	ea
BO2	Axle case side tube gasket	23-38	.60	ea
BO7	Axle case centre to side tube lockwasher	All	.25	ea
BO10	Axle case to torque tube lockwasher	23-29, 30-39	.45	ea
BO114	Adjuster plate gasket	29-38	.30	ea